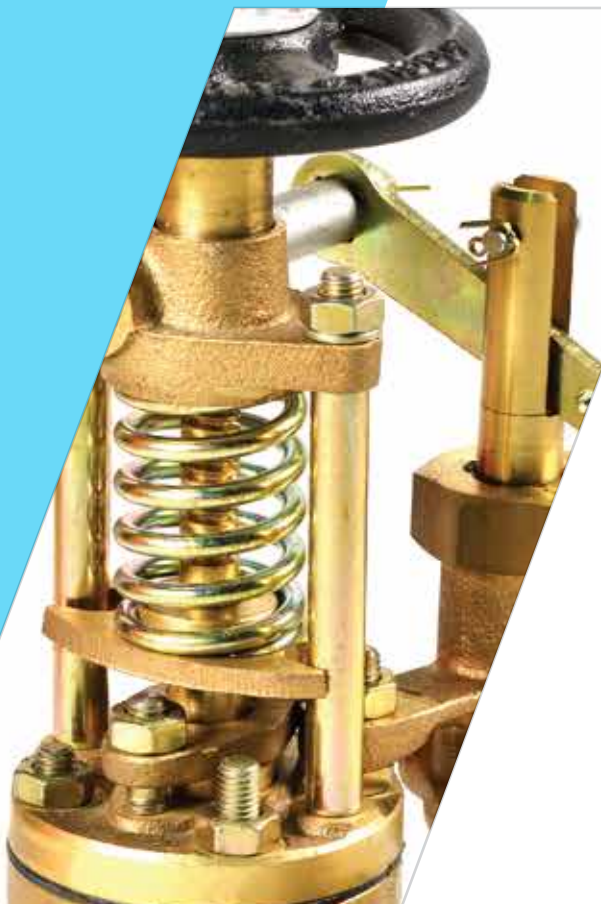


JIS & DIN
Standards
Marine Valves
Catalogue
3rd Edition





committed to
become
your worldwide
supplier



Atlas Sea Group is a pool of companies committed to serving the marine industry



■ Atlas Marine Valves is a young member of Atlas Sea Group.

We are specialised on JIS & DIN standard marine valves and butterfly valve spares, supply with stock points in Istanbul, Singapore and Busan.

With our hands-on experience in general ship supply industry since 1979, we are able to understand and help our customers for their critical valves and fittings needs not only during their vessels dry dockings in Turkey, but also their valve supplies round the globe with our expert valve team.

Our JIS Standard valves are produced in Korea and our DIN Standards valves are produced in Turkey. Our foundries are Class Approved by DNV-GL, LR, ABS, BV, KR and ClassNK.

We strictly follow MARPOL & IACS rules and keep a substantial stock of those critical valves with proper body & seat material. Full class and test certification of most prestigious IACS members are sealed to our valves during production and are readily available from stock.

Besides the complete Valves, we also stock original butterfly valves spares (NBR, RTFE, VITON Seats, Discs, O-rings & screws, Stem, Bushing, Packing etc.) of maker KEYSTONE VALVE KOREA. We are able to provide other makers' spares as well from our global sources as per your demand and arrange prompt deliveries worldwide.

With the help of our experienced sales & logistics teams, we provide quick but correct response and arrange on time deliveries worldwide. Paying high attention to each enquiry, we send our quotations with complete dimensions details and technical drawings to make sure to offer and supply the correct valves, let our customers save on time and cost.

We hereby welcome you to enjoy our regular stock product catalogue and invite you to experience our quality service in the near future.



■ Atlas Ship Supply is a leading full-service shipchandling company provider of all kind of fresh, frozen, dry provisions, cabin, deck, engine stores to worldwide ship owners and ship managers in the Turkish waters. While serving our valuable customers, we acted as pioneers to deal with many challenges of operations in a constantly developing industry in Turkey.

JIS Standard

INDEX

GLOBE & ANGLE VALVES, BRONZE BODY, JIS 5K & 16K	06
GLOBE & ANGLE VALVES, BRONZE BODY, JIS 16K	07
GLOBE & ANGLE VALVES TYPE - S , BRONZE BODY, 20K	08
GATE VALVES, BRONZE BODY, JIS 5K & 10K	08
SELF CLOSING VALVES, BRONZE BODY, JIS 5K & 10K	08
GLOBE & ANGLE AIR VALVES, FORGED STEEL BODY, JIS 20K & 46K	09
GLOBE & ANGLE VALVES, CAST STEEL & CAST IRON BODY, JIS 5K	10
GLOBE & ANGLE VALVES, CAST STEEL & CAST IRON BODY, JIS 10K	11
GLOBE & ANGLE VALVES, CAST IRON BODY, JIS 16K	12
GLOBE & ANGLE VALVES, CAST STEEL BODY, JIS 20K	12
STORM VALVES, VERTICAL & ANGLE PATTERN, JIS 5K & 10K	18
GATE VALVES CAST STEEL & CAST IRON BODY, 5K, 10K & 16K	20
STEAM TRAPS JIS 16K, SWING CHECK VALVES JIS 5K & 10K, Y-STRAINERS JIS 10K	22
QUICK CLOSING VALVES, BRONZE & CAST STEEL, 5K	24
QUICK CLOSING VALVES, BRONZE & CAST STEEL, 10K	25
BUTTERFLY VALVES, WAFER TYPE JIS 5K & 10K - LEVER & WORM GEAR OPERATED	27
BUTTERFLY VALVES, WAFER TYPE JIS 5K & 10K - BARESHAFT	27
KEYSTONE VALVE KOREA	28
BUTTERFLY VALVES GENUINE SPARES	29
BUTTERFLY VALVES, LUG TYPE JIS 5K & 10K, WITH CLASS CERTIFICATE	30
BUTTERFLY VALVES, LUG TYPE JIS 5K & 10K, WITHOUT CLASS CERTIFICATE	31
BUTTERFLY VALVES, FLANGED TYPE, SHORT & LONG PATTERN JIS 5K & 10K	32
DUO CHECK VALVES WAFER TYPE, JIS 5K & 10K	33
HOSE VALVES, GLOBE & ANGLE PATTERN JIS 5K	38
HOSE VALVES, GLOBE & ANGLE PATTERN JIS 10K	39
AIR VENT HEADS, CASTING & WELDING TYPES, JIS 5K	42
SLIP ON FLANGES JIS 5K & 10K	44

DIN Standard

GLOBE & ANGLE VALVES, BRONZE BODY, DIN PN16	13
GLOBE & ANGLE VALVES, NODULAR CAST IRON BODY, DIN PN10/16	14
GLOBE & ANGLE VALVES, CAST IRON BODY, DIN PN10/16	15
GLOBE & ANGLE VALVES, CAST STEEL BODY, DIN PN40	16
GLOBE VALVES BELLOW SEALED TYPE DIN PN16	16
STORM VALVES, VERTICAL & ANGLE PATTERN, DIN 16	19
GATE VALVES, CAST IRON & NODULAR CAST IRON BODY, DIN PN10	21
SWING CHECK VALVES, DIN PN16	23
MUD BOXES, DIN PN16	23
QUICK CLOSING VALVES, NODULAR CAST IRON BODY, DIN PN16	26
BUTTERFLY VALVES, WAFER TYPE, DIN PN10 / 16	34
BUTTERFLY VALVES, LUG TYPE, DIN PN10 / 16	35
BUTTERFLY VALVES, DOUBLE FLANGED TYPE, SERIES 55 DIN PN16	35
BUTTERFLY VALVES, DOUBLE FLANGED TYPE, 5752 PN10	36
BUTTERFLY VALVES, DOUBLE FLANGED TYPE, SERIES 53 DIN PN10 / 16	36
HOSE VALVES, BRONZE BODY, DIN PN16	40
AIR VENT HEADS, FLOAT DISC & BALL TYPES DIN PN10 / 16	43
SLIP ON FLANGES DIN	45
JIS & DIN FLANGE DIMENSION TABLES	46
MANUFACTURERS APPROVAL & QUALITY CERTIFICATES	47



JIS DIN

JIS Standard DIN Standard





► **GLOBE VALVES, JIS 5K**

BRONZE BODY & TRIM, F-7301 STOP & F-7351 SCREW DOWN NON RETURN

DN	CodeSTOP	CodeSDNR	Flange OD	PCD	Holes x dia	Face to Face
15	MV750121	MV751051	80	60	4 12	100
20	MV750122	MV751052	85	65	4 12	110
25	MV750123	MV751053	95	75	4 12	120
32	MV750124	MV751054	115	90	4 15	140
40	MV750125	MV751055	120	95	4 15	160
50	MV750125	MV751056	130	105	4 15	210

► **ANGLE VALVES, JIS 5K**

BRONZE BODY & TRIM, F-7302 STOP & F-7352 SCREW DOWN NON RETURN



DN	CodeSTOP	CodeSDNR	Flange OD	PCD	Holes x dia	Center to Face
15	MV750131	MV751061	80	60	4 12	55
20	MV750132	MV751062	85	65	4 12	60
25	MV750133	MV751063	95	75	4 12	65
32	MV750134	MV751064	115	90	4 15	80
40	MV750135	MV751065	120	95	4 15	85
50	MV750136	MV751066	130	105	4 15	100

► **GLOBE VALVES, JIS 16K**

BRONZE BODY & TRIM, F-7303 STOP & F-7409 SCREW DOWN NON RETURN



DN	CodeSTOP	CodeSDNR	Flange OD	PCD	Holes x dia	Face to Face
15	MV750141	MV751071	95	70	4 15	110
20	MV750142	MV751072	100	75	4 15	120
25	MV750143	MV751073	125	90	4 19	130
32	MV750144	MV751074	135	100	4 19	160
40	MV750145	MV751075	140	105	4 19	180
50	MV750146	MV751076	155	120	8 19	220

► **ANGLE VALVES, JIS 16K**

BRONZE BODY & TRIM, F-7304 STOP & F-7410 SCREW DOWN NON RETURN



DN	CodeSTOP	CodeSDNR	Flange OD	PCD	Holes x dia	Center to Face
15	MV750151	MV751081	95	70	4 15	70
20	MV750152	MV751082	100	75	4 15	75
25	MV750153	MV751083	125	90	4 19	85
32	MV750154	MV751084	135	100	4 19	95
40	MV750155	MV751085	140	105	4 19	100

► **GLOBE VALVES, JIS 16K FLANGED - WITH DNV - GL CLASS CERTIFICATE**
BRONZE BODY & TRIM, F-7409 SCREW DOWN NON RETURN

DN	Code	Flange OD	PCD	Holes no. x dia	Face to Face
15	MV751071DNV	95	70	4 15	110
20	MV751072DNV	100	75	4 15	120
25	MV751073DNV	125	90	4 19	130
32	MV751074DNV	135	100	4 19	160
40	MV751075DNV	140	105	4 19	180



DNV-GL

► **ANGLE VALVES, JIS 16K FLANGED - WITH DNV - GL CLASS CERTIFICATE**
BRONZE BODY & TRIM, F-7410 SCREW DOWN NON RETURN

DN	Code	Flange OD	PCD	Holes no. x dia	Center to Face
15	MV751081DNV	95	70	4 15	70
20	MV751082DNV	100	75	4 15	75
25	MV751083DNV	125	90	4 19	85
32	MV751084DNV	135	100	4 19	95
40	MV751085DNV	140	105	4 19	100



DNV-GL

► **GLOBE VALVES, JIS 16K**
UNION BONNET - BRONZE BODY & TRIM, F-7348

DN	Code STOP	Flange OD	PCD	Holes no. x dia	Face to Face
15	MV750521	95	70	4 15	110
20	MV750522	100	75	4 15	120
25	MV750523	125	90	4 19	130
32	MV750524	135	100	4 19	160
40	MV750525	140	105	4 19	180



► **ANGLE VALVES, JIS 16K**
UNION BONNET - BRONZE BODY & TRIM, F-7349

DN	Code STOP	Flange OD	PCD	Holes no. x dia	Center to Face
15	MV750531	95	70	4 15	70
20	MV750532	100	75	4 15	75
25	MV750533	125	90	4 19	85
32	MV750534	135	100	4 19	95
40	MV750535	140	105	4 19	100





► **GLOBE VALVES, TYPE - S, JIS 20K**
BRONZE BODY & TRIM, F-7388

DN	Code	Inlet	Outlet
6	MV750551	M20 x 1.5	Union Brazing Copper Pipe 8 & 10 MM
10	MV750552	M24 x 2.0	Union Brazing Copper Pipe 15 MM



► **ANGLE VALVES, TYPE - S, JIS 20K**
BRONZE BODY & TRIM, F-7389

DN	Code	Inlet	Outlet
6	MV750561	M20 x 1.5	Union Brazing Copper Pipe 8 & 10 MM
10	MV750562	M24 x 2.0	Union Brazing Copper Pipe 15 MM



► **GATE VALVES, JIS 5K**
BRONZE BODY & TRIM - F-7367

DN	CodeSTOP	Flange OD	PCD	Holes no. x dia		Face to Face
15	MV750951	80	60	4	12	90
20	MV750952	85	65	4	12	100
25	MV750953	95	75	4	12	110
32	MV750954	115	90	4	15	130
40	MV750955	120	95	4	15	140



► **GATE VALVES, JIS 10K**
BRONZE BODY & TRIM - F-7368

DN	CodeSTOP	Flange OD	PCD	Holes no. x dia		Center to Face
15	MV750961	95	70	4	15	100
20	MV750962	100	75	4	15	110
25	MV750963	125	90	4	19	120
32	MV750964	135	100	4	19	140
40	MV750965	140	105	4	19	150

► **SELF CLOSING VALVES - U TYPE & F TYPE**
BRONZE BODY & TRIM - F7398

DN	CodeSTOP	Flange OD	PCD	Holes no. x dia	Face to Face
15	MV758501	95	UNDRILLED FLANGES. CAN BE DRILLED AS PER JIS 5K / 10K OR DIN PN16		110
20	MV758502	100			130
25	MV758503	125			130
32	MV758504	135			180
40	MV758505	140			180



► **GLOBE AIR VALVES, JIS 20K F7421**

FORGED STEEL BODY - STAINLESS STEEL TRIM - WITH DNV-GL CLASS CERTIFICATE

DN	Code	Flange OD	PCD	Holes x dia	Face to Face
15	MV750611	95	70	4 15	140
20	MV750612	100	75	4 15	160
25	MV750613	125	90	4 19	180



► **ANGLE AIR VALVES, JIS 20K F7422**

FORGED STEEL BODY - STAINLESS STEEL TRIM - WITH DNV-GL CLASS CERTIFICATE

DN	Code	Flange OD	PCD	Holes x dia	Center to Face
15	MV750626	95	70	4 15	75
20	MV750627	100	75	4 15	80
25	MV750628	125	90	4 19	95



► **GLOBE AIR VALVES, JIS 46K F7336**

FORGED STEEL BODY - STAINLESS STEEL TRIM - WITH DNV-GL CLASS CERTIFICATE

DN	Code	Flange OD	PCD	Holes no. x dia	Face to Face
15	MV750741	115	80	4 19	150
20	MV750742	120	85	4 19	170
25	MV750743	130	95	4 19	200

***SUITABLE FOR JIS 30K / 40K AND 46K FLANGE CONNECTIONS**



► **ANGLE AIR VALVES, JIS 46K F7337**

FORGED STEEL BODY - STAINLESS STEEL TRIM - WITH DNV-GL CLASS CERTIFICATE

DN	Code	Flange OD	PCD	Holes x dia	Center to Face
15	MV750756	115	80	4 19	90
20	MV750757	120	85	4 19	95
25	MV750758	130	95	4 19	100

***SUITABLE FOR JIS 30K / 40K AND 46K FLANGE CONNECTIONS**





► **GLOBE VALVES, JIS 5K - WITH DNV-GL CLASS CERTIFICATE**

CAST STEEL BODY, S.S. TRIM, F-7311 STOP & SCREW DOWN NON RETURN

DN	CodeSTOP	CodeSDNR	Flange OD	PCD	Holes x dia	Face to Face
50	MV750301	MV750310	130	105	4 15	210
65	MV750302	MV750311	250	130	4 15	250
80	MV750303	MV750312	180	145	4 19	280
100	MV750304	MV750313	200	165	8 19	340
125	MV750305	MV750314	235	200	8 19	410
150	MV750306	MV750315	265	230	8 19	480
200	MV750307	MV750316	320	280	8 23	570

► **ANGLE VALVES, JIS 5K - WITH DNV-GL CLASS CERTIFICATE**

CAST STEEL BODY, S.S. TRIM, F-7312 STOP & SCREW DOWN NON RETURN



DN	CodeSTOP	CodeSDNR	Flange OD	PCD	Holes x dia	Center to Face
50	MV750320	MV750330	130	105	4 15	100
65	MV750321	MV750331	250	130	4 15	115
80	MV750322	MV750332	180	145	4 19	130
100	MV750323	MV750333	200	165	8 19	150
125	MV750324	MV750334	235	200	8 19	170
150	MV750325	MV750335	265	230	8 19	190
200	MV750326	MV750336	320	280	8 23	220
250	MV750406	MV750406SDNR	385	345	12 23	275
300	MV750407	MV750407SDNR	430	390	12 23	310
350	MV750408	MV750408SDNR	480	435	12 23	360

► **GLOBE VALVES, JIS 5K**

CAST IRON BODY, BRONZE TRIM, F-7305 STOP & F-7353 SCREW DOWN NON RETURN



DN	CodeSTOP	CodeSDNR	Flange OD	PCD	Holes x dia	Face to Face
50	MV750201	MV751101	130	105	4 15	210
65	MV750202	MV751102	155	130	4 15	250
80	MV750203	MV751103	180	145	4 19	280
100	MV750204	MV751104	200	165	8 19	340
125	MV750205	MV751105	235	200	8 19	410
150	MV750206	MV751106	265	230	8 19	480
200	MV750207	MV751107	320	280	8 23	570

► **ANGLE VALVES, JIS 5K**

CAST IRON BODY, BRONZE TRIM, F-7306 STOP & F-7354 SCREW DOWN NON RETURN



DN	CodeSTOP	CodeSDNR	Flange OD	PCD	Holes x dia	Center to Face
50	MV750216	MV751116	130	105	4 15	100
65	MV750217	MV751117	155	130	4 15	115
80	MV750218	MV751118	180	145	4 19	130
100	MV750219	MV751119	200	165	8 19	150
125	MV750220	MV751120	235	200	8 19	170
150	MV750221	MV751121	265	230	8 19	190
200	MV750222	MV751122	320	280	8 23	220
250	MV750223	MV751123	385	345	12 23	275

► **GLOBE VALVES, JIS 10K - WITH DNV-GL CLASS CERTIFICATE**

CAST STEEL BODY, S.S. TRIM, F-7319 STOP & F-7471 SCREW DOWN NON RETURN

DN	CodeSTOP	CodeSDNR	Flange OD	PCD	Holes x dia	Face to Face
50	MV750411	MV751201	155	120	4 19	220
65	MV750412	MV751202	175	140	4 19	270
80	MV750413	MV751203	185	150	8 19	300
100	MV750414	MV751204	210	175	8 19	350
125	MV750415	MV751205	250	210	8 23	420
150	MV750416	MV751206	280	240	8 23	490
200	MV750417	MV751207	330	290	12 23	570
250	MV750418	MV751208	400	355	12 25	740



► **ANGLE VALVES, JIS 10K - WITH DNV-GL CLASS CERTIFICATE**

CAST STEEL BODY, S.S. TRIM, F-7320 STOP & F-7472 SCREW DOWN NON RETURN

DN	CodeSTOP	CodeSDNR	Flange OD	PCD	Holes x dia	Center to Face
50	MV750421	MV751216	155	120	4 19	120
65	MV750422	MV751217	175	140	4 19	130
80	MV750423	MV751218	185	150	8 19	140
100	MV750424	MV751219	210	175	8 19	160
125	MV750425	MV751220	250	210	8 23	180
150	MV750426	MV751221	280	240	8 23	205
200	MV750427	MV751222	330	290	12 23	230
250	MV750428	MV751223	400	355	12 25	290



► **GLOBE VALVES, JIS 10K**

CAST IRON BODY BRONZE TRIM, F-7307 STOP & F-7375 SCREW DOWN NON RETURN

DN	CodeSTOP	CodeSDNR	Flange OD	PCD	Holes x dia	Face to Face
50	MV750231	MV751131	155	120	4 19	220
65	MV750232	MV751132	175	140	4 19	270
80	MV750233	MV751133	185	150	8 19	300
100	MV750234	MV751134	210	175	8 19	350
125	MV750235	MV751135	250	210	8 23	420
150	MV750236	MV751136	280	240	8 23	490
200	MV750237	MV751137	330	290	12 23	570



► **ANGLE VALVES, JIS 10K**

CAST IRON BODY, BRONZE TRIM, F-7308 STOP & F-7376 SCREW DOWN NON RETURN

DN	CodeSTOP	CodeSDNR	Flange OD	PCD	Holes x dia	Center to Face
50	MV750246	MV751141	155	120	4 19	120
65	MV750247	MV751142	175	140	4 19	130
80	MV750248	MV751143	185	150	8 19	140
100	MV750249	MV751144	210	175	8 19	160
125	MV750250	MV751145	250	210	8 23	180
150	MV750251	MV751146	280	240	8 23	205
200	MV750252	MV751147	330	290	12 23	230





► **GLOBE VALVES, JIS 16K**
CAST IRON BODY, BRONZE TRIM, F-7309

DN	Code	Flange OD	PCD	Holes no. x dia		Face to Face
50	MV750261	155	120	8	19	220
65	MV750262	175	140	8	19	270
80	MV750263	200	160	8	23	300
100	MV750264	225	185	8	23	350
125	MV750265	270	225	8	25	430
150	MV750266	305	260	12	25	500
200	MV750267	350	305	12	25	570



► **ANGLE VALVES, JIS 16K**
CAST IRON BODY, BRONZE BODY & TRIM, F-7310

DN	Code	Flange OD	PCD	Holes no. x dia		Center to Face
50	MV750271	155	120	8	19	120
65	MV750272	175	140	8	19	130
80	MV750273	200	160	8	23	150
100	MV750274	225	185	8	23	170
125	MV750275	270	225	8	25	200
150	MV750276	305	260	12	25	225
200	MV750277	350	305	12	25	250



DNV-GL

► **GLOBE VALVES, JIS 20K - WITH DNV-GL CLASS CERTIFICATE**
CAST STEEL BODY, S.S. TRIM, F-7313 STOP & F-7473 SCREW DOWN NON RETURN

DN	CodeSTOP	CodeSDNR	Flange OD	PCD	Holes x dia		Face to Face
32	MV750431	MV751231	135	100	4	19	190
40	MV750432	MV751232	140	105	4	19	200
50	MV750433	MV751233	155	120	8	19	230
65	MV750434	MV751234	175	140	8	19	270
80	MV750435	MV751235	200	160	8	23	300
100	MV750436	MV751237	225	185	8	23	350
125	MV750437	MV751238	270	225	8	25	430
150	MV750438	MV751239	305	260	12	25	500
200	MV750439	—————	350	305	12	25	560
250	MV750440	—————	430	380	12	27	660



DNV-GL

► **ANGLE VALVES, JIS 20K - WITH DNV-GL CLASS CERTIFICATE**
CAST STEEL BODY, S.S. TRIM, F-7314 STOP & F-7474 SCREW DOWN NON RETURN

DN	CodeSTOP	CodeSDNR	Flange OD	PCD	Holes x dia		Center to Face
32	MV750441	MV751246	135	100	4	19	100
40	MV750442	MV751247	140	105	4	19	110
50	MV750443	MV751248	155	120	8	19	125
65	MV750444	MV751249	175	140	8	19	135
80	MV750445	MV751250	200	160	8	23	150
100	MV750446	MV751251	225	185	8	23	170
125	MV750447	MV751252	270	225	8	25	200
150	MV750448	MV751253	305	260	12	25	225
200	MV750449	MV751254	350	305	12	25	280
250	MV750450	MV751255	430	380	12	27	310

► **GLOBE VALVES,**
BRONZE BODY & TRIM, FIGURE 275, SCREWED BONNET, DIN PN16

DN	Code	PCD	Holes x dia		Face to Face
15	MV755121	65	4	14	70
20	MV755122	75	4	14	80
25	MV755123	85	4	14	90
32	MV755124	100	4	18	105
40	MV755125	110	4	18	120
50	MV755126	125	4	18	140



► **GLOBE VALVES,**
BRONZE BODY & TRIM, FIGURE 1270, BOLTED BONNET, DIN PN16

DN	Code	Flange OD	PCD	Holes x dia		Face to Face
15	MV755201	95	65	4	14	130
20	MV755202	105	75	4	14	150
25	MV755203	115	85	4	14	160
32	MV755204	140	100	4	18	180
40	MV755205	150	110	4	18	200
50	MV755206	165	125	4	18	230



► **ANGLE VALVES,**
BRONZE BODY & TRIM, FIGURE 1271, BOLTED BONNET, DIN PN16

DN	Code	Flange OD	PCD	Holes x dia		Center to Face
15	MV755216	95	65	4	14	90
20	MV755217	105	75	4	14	95
25	MV755218	115	85	4	14	100
32	MV755219	140	100	4	18	105
40	MV755220	150	110	4	18	115
50	MV755221	165	125	4	18	125





► **GLOBE VALVES,**

NODULAR CAST IRON BODY & BRONZE TRIM, FIG.263, STOP & SDNR, DIN PN 10/16 WITH LR CLASS CERTIFICATE

DN	CodeSTOP	CodeSDNR	Flange OD	PCD	Holes x dia	Face to Face
15	MV755401	MV755401NR	95	65	4 14	130
20	MV755402	MV755402NR	105	75	4 14	150
25	MV755403	MV755403NR	115	85	4 14	160
32	MV755404	MV755404NR	140	100	4 18	180
40	MV755405	MV755405NR	150	110	4 18	200
50	MV755406	MV755406NR	165	125	4 18	230
65	MV755407	MV755407NR	185	145	4 18	290
80	MV755408	MV755408NR	200	160	8 18	310
100	MV755409	MV755409NR	220	180	8 18	350
125	MV755410	MV755410NR	250	210	8 18	400
150	MV755411	MV755411NR	285	240	8 22	480
200	MV755412	MV755412NR	340	295	8 22	600
250	MV755413	MV755413NR	395	350	12 22	730
300	MV755414	MV755414NR	445	400	12 22	850

****DN200 & DN250 ARE ALSO AVAILABLE WITH PN16 FLANGE CONNECTION.**

► **ANGLE VALVES,**

NODULAR CAST IRON BODY & BRONZE TRIM, FIG.264, STOP & SDNR, DIN PN 10/16 WITH LR CLASS CERTIFICATE



DN	CodeSTOP	CodeSDNR	Flange OD	PCD	Holes x dia	Center to Face
15	MV755416	MV755416NR	95	65	4 14	90
20	MV755417	MV755417NR	105	75	4 14	95
25	MV755418	MV755418NR	115	85	4 14	100
32	MV755419	MV755419NR	140	100	4 18	105
40	MV755420	MV755420NR	150	110	4 18	115
50	MV755421	MV755421NR	165	125	4 18	125
65	MV755422	MV755422NR	185	145	4 18	145
80	MV755423	MV755423NR	200	160	8 18	155
100	MV755424	MV755424NR	220	180	8 18	175
125	MV755425	MV755425NR	250	210	8 18	200
150	MV755426	MV755426NR	285	240	8 22	225
200	MV755428	MV755428NR	340	295	8 22	275
250	MV755429	MV755429NR	395	350	12 22	325
300	MV755430	MV755430NR	445	400	12 22	375

****DN200 & DN250 ARE ALSO AVAILABLE WITH PN16 FLANGE CONNECTION.**

► **GLOBE VALVES,**

CAST IRON BODY & BRONZE TRIM, FIG.268, STOP & SDNR, DIN PN 10/16

DN	CodeSTOP	CodeSDNR	Flange OD	PCD	Holes x dia		Face to Face
15	MV755261	MV755261NR	95	65	4	14	130
20	MV755262	MV755262NR	105	75	4	14	150
25	MV755263	MV755263NR	115	85	4	14	160
32	MV755264	MV755264NR	140	100	4	18	180
40	MV755265	MV755265NR	150	110	4	18	200
50	MV755266	MV755266NR	165	125	4	18	230
65	MV755267	MV755267NR	185	145	4	18	290
80	MV755268	MV755268NR	200	160	8	18	310
100	MV755269	MV755269NR	220	180	8	18	350
125	MV755270	MV755270NR	250	210	8	18	400
150	MV755271	MV755271NR	285	240	8	22	480
200	MV755272	MV755272NR	340	295	8	22	600
250	MV755273	MV755273NR	405	355	12	26	730

****DN200 & DN250 ARE ALSO AVAILABLE WITH PN16 FLANGE CONNECTION.**



► **ANGLE VALVES,**

CAST IRON BODY & BRONZE TRIM, FIG.269, STOP & SDNR, DIN PN 10/16

DN	CodeSTOP	CodeSDNR	Flange OD	PCD	Holes x dia		Center to Face
15	MV755276	MV755276NR	95	65	4	14	90
20	MV755277	MV755277NR	105	75	4	14	95
25	MV755278	MV755278NR	115	85	4	14	100
32	MV755279	MV755279NR	140	100	4	18	105
40	MV755280	MV755280NR	150	110	4	18	115
50	MV755281	MV755281NR	165	125	4	18	125
65	MV755282	MV755282NR	185	145	4	18	145
80	MV755283	MV755283NR	200	160	8	18	155
100	MV755284	MV755284NR	220	180	8	18	175
125	MV755285	MV755285NR	250	210	8	18	200
150	MV755286	MV755286NR	285	240	8	22	225
200	MV755288	MV755288NR	340	295	8	22	275
250	MV755289	MV755289NR	405	355	12	26	325

****DN200 & DN250 ARE ALSO AVAILABLE WITH PN16 FLANGE CONNECTION.**





► **GLOBE VALVES,**

CAST STEEL BODY & STAINLESS STEEL TRIM, FIG.417, STOP & SDNR, DIN PN40 WITH LR CLASS CERTIFICATE

DN	CodeSTOP	CodeSDNR	Flange OD	PCD	Holes x dia		Face to Face
15	MV755326	MV755326NR	95	65	4	14	130
20	MV755327	MV755327NR	105	75	4	14	150
25	MV755328	MV755328NR	115	85	4	14	160
32	MV755329	MV755329NR	140	100	4	18	180
40	MV755330	MV755330NR	150	110	4	18	200
50	MV755331	MV755331NR	165	125	4	18	230
65	MV755332	MV755332NR	185	145	8	18	290
80	MV755333	MV755333NR	200	160	8	18	310
100	MV755334	MV755334NR	235	190	8	22	350
125	MV755335	MV755335NR	270	220	8	26	400
150	MV755336	MV755336NR	300	250	8	26	480

► **ANGLE VALVES,**

CAST STEEL BODY & STAINLESS STEEL TRIM, FIG.418, STOP & SDNR, DIN PN40 WITH LR CLASS CERTIFICATE



DN	CodeSTOP	CodeSDNR	Flange OD	PCD	Holes x dia		Center to Face
15	MV755341	MV755341NR	95	65	4	14	90
20	MV755342	MV755342NR	105	75	4	14	95
25	MV755343	MV755343NR	115	85	4	14	100
32	MV755344	MV755344NR	140	100	4	18	105
40	MV755345	MV755345NR	150	110	4	18	115
50	MV755346	MV755346NR	165	125	4	18	125
65	MV755347	MV755347NR	185	145	8	18	145
80	MV755348	MV755348NR	200	160	8	18	155
100	MV755349	MV755349NR	235	190	8	22	175
125	MV755350	MV755350NR	270	220	8	26	200
150	MV755351	MV755351NR	300	250	8	26	225

► **GLOBE VALVES, BELLOW SEALED TYPE FOR THERMO OIL FLOW,**

NODULAR CAST IRON BODY & STAINLESS STEEL TRIM, FIG.432, STOP & SDNR, DIN PN16



DN	CodeSTOP	CodeSDNR	Flange OD	PCD	Holes x dia		Face to Face
15	MV755378	MV755378NR	95	65	4	14	130
20	MV755379	MV755379NR	105	75	4	14	150
25	MV755380	MV755380NR	115	85	4	14	160
32	MV755381	MV755381NR	140	100	4	18	180
40	MV755382	MV755382NR	150	110	4	18	200
50	MV755383	MV755383NR	165	125	4	18	230
65	MV755384	MV755384NR	185	145	4	18	290
80	MV755385	MV755385NR	200	160	8	18	310
100	MV755386	MV755386NR	220	180	8	18	350
125	MV755387	MV755387NR	250	210	8	18	400
150	MV755388	MV755388NR	285	240	8	22	480
200	MV755389	MV755389NR	340	295	12	22	600

WORLDWIDE SUPPLIES



18



DNV-GL

► **STORM VALVES, JIS 5K F3060 - VERTICAL PATTERN, WITH CLOSING DEVICE**
CAST STEEL BODY, BRONZE TRIM, WITH DNV-GL CLASS CERTIFICATE

DN	Code	Flange OD	PCD	Holes no. x dia		Face to Face
50	MV754241	130	105	4	15	210
65	MV754242	155	130	4	15	240
80	MV754243	180	145	4	19	260
100	MV754244	200	165	8	19	280
125	MV754245	235	200	8	19	330
150	MV754246	265	230	8	19	360

► **STORM VALVES, JIS 5K F3060 - ANGLE PATTERN, WITH CLOSING DEVICE**
CAST STEEL BODY, BRONZE TRIM, WITH DNV-GL CLASS CERTIFICATE

DN	Code	Flange OD	PCD	Holes no. x dia		Center to Face
50	MV754251	130	105	4	15	170
65	MV754252	155	130	4	15	200
80	MV754253	180	145	4	19	220
100	MV754254	200	165	8	19	250
125	MV754255	235	200	8	19	270
150	MV754256	265	230	8	19	310



DNV-GL

► **STORM VALVES, JIS 10K F3059 - VERTICAL PATTERN, WITH CLOSING DEVICE**
CAST STEEL BODY, BRONZE TRIM, WITH DNV-GL CLASS CERTIFICATE

DN	Code	Flange OD	PCD	Holes no. x dia		Face to Face
50	MV754241K10	155	120	4	19	210
65	MV754242K10	175	140	4	19	240
80	MV754243K10	185	150	8	19	260
100	MV754244K10	210	175	8	19	280
125	MV754245K10	250	210	8	23	330
150	MV754246K10	280	240	8	23	360
200	MV754247K10	UNDRILLED, TO BE DRILLED AS 5K OR 10K				500



DNV-GL

► **STORM VALVES, JIS 10K F3059 - ANGLE PATTERN, WITH CLOSING DEVICE**
CAST STEEL BODY, BRONZE TRIM, WITH DNV-GL CLASS CERTIFICATE

DN	Code	Flange OD	PCD	Holes no. x dia		Center to Face
50	MV754251K10	155	120	4	19	170
65	MV754252K10	175	140	4	19	200
80	MV754253K10	185	150	8	19	220
100	MV754254K10	210	175	8	19	250
125	MV754255K10	250	210	8	23	270
150	MV754256K10	280	240	8	23	310
200	MV754257K10	UNDRILLED, TO BE DRILLED AS 5K OR 10K				400



DNV-GL

▶ **STORM VALVES, FIG. 1209**

VERTICAL PATTERN, NODULAR CAST IRON BODY / BRONZE TRIM,
WITH LR CLASS CERTIFICATE, DIN PN16 FLANGED

DN	Code	Flange OD	PCD	Holes x dia		Face to Face
50	MV754291	165	125	4	18	200
65	MV754292	185	145	4	18	240
80	MV754293	200	160	8	18	260
100	MV754294	220	180	8	18	300
125	MV754295	250	210	8	22	350
150	MV754296	285	240	8	22	400

▶ **STORM VALVES, FIG. 1207**

ANGLE PATTERN, NODULAR CAST IRON BODY / BRONZE TRIM,
WITH LR CLASS CERTIFICATE, DIN PN16 FLANGED

SIZE	50	65	80	100	125	150
CODE	MV754277	MV754278	MV754279	MV754280	MV754281	MV754282
INLET FLANGE O.D.	165	185	200	220	250	285
INLET FLANGE PCD	125	145	160	180	210	240
INLET FLANGE HOLES x DIA	4 18	4 18	8 18	8 18	8 18	8 22
OUTLET FLANGE O.D.	200	220	250	285	315	340
OUTLET FLANGE PCD	160	180	210	240	270	295
OUTLET FLANGE HOLES x DIA	8 18	8 18	8 18	8 22	8 22	8 22
FACE OUTLET TO INLET CENTER	180	200	215	250	290	330
FACE INLET TO CENTER OUTLET	90	100	108	130	152	176





▶ GATE VALVES, JIS 5K
CAST STEEL BODY, STAINLESS STEEL TRIM - WITH DNV-GL CLASS CERTIFICATE

DN	Code	Flange OD	PCD	Holes no. x dia Face to Face		
50	MV750801CS5K	130	105	4	15	180
65	MV750802CS5K	155	130	4	15	190
80	MV750803CS5K	180	145	4	19	200
100	MV750804CS5K	200	165	8	19	230
125	MV750805CS5K	235	200	8	19	250
150	MV750806CS5K	265	230	8	19	270
200	MV750807CS5K	320	280	8	23	290

▶ GATE VALVES, JIS 10K F7366
CAST STEEL BODY, STAINLESS STEEL TRIM - WITH DNV-GL CLASS CERTIFICATE

DN	Code	Flange OD	PCD	Holes no. x dia Face to Face		
50	MV750901	155	120	4	19	200
65	MV750902	175	140	4	19	220
80	MV750903	185	150	8	19	230
100	MV750904	210	175	8	19	250
125	MV750905	250	210	8	23	270
150	MV750906	280	240	8	23	290
200	MV750907	330	290	12	23	310

▶ GATE VALVES, JIS 5K F7363
CAST IRON BODY, BRONZE TRIM

DN	Code	Flange OD	PCD	Holes no. x dia Face to Face		
50	MV750801	130	105	4	15	180
65	MV750802	155	130	4	15	190
80	MV750803	180	145	4	19	200
100	MV750804	200	165	8	19	230
125	MV750805	235	200	8	19	250
150	MV750806	265	230	8	19	270

▶ GATE VALVES, JIS 10K F7364
CAST IRON BODY, BRONZE TRIM

DN	Code	Flange OD	PCD	Holes no. x dia Face to Face		
50	MV750821	155	120	4	19	200
65	MV750822	175	140	4	19	220
80	MV750823	185	150	8	19	230
100	MV750824	210	175	8	19	250
125	MV750825	250	210	8	23	270
150	MV750826	280	240	8	23	290

▶ GATE VALVES, JIS 16K F7369, KOREAN STANDARD - SHORT PATTERN
CAST IRON BODY, BRONZE TRIM

DN	Code	Flange OD	PCD	Holes no. x dia Face to Face		
50	MV750832	155	120	8	19	200
65	MV750833	175	140	8	19	220
80	MV750834	200	160	8	23	230
100	MV750835	225	185	8	23	250
125	MV750836	270	225	8	25	270
150	MV750837	305	260	12	25	290

▶ GATE VALVES, JIS 16K F7369, JAPANESE STANDARD - LONG PATTERN
CAST IRON BODY, BRONZE TRIM

DN	Code	Flange OD	PCD	Holes no. x dia Face to Face		
50	MV750832K16	155	120	8	19	210
65	MV750833K16	175	140	8	19	240
80	MV750834K16	200	160	8	23	260
100	MV750835K16	225	185	8	23	290
125	MV750836K16	270	225	8	25	310
150	MV750837K16	305	260	12	25	330



► **GATE VALVES,**
CAST IRON BODY, BRONZE TRIM, FIGURE 316 - DIN PN10

DN	Code	Flange OD	PCD	Holes no. x dia Face to Face		
40	MV755571	150	110	4	18	140
50	MV755572	165	125	4	18	150
65	MV755573	185	145	4	18	170
80	MV755574	200	160	8	18	180
100	MV755575	220	180	8	18	190
125	MV755576	250	210	8	22	200
150	MV755577	285	240	8	22	210
200	MV755578	340	295	8	22	230
250	MV755579	395	350	12	22	250
300	MV755580	445	400	12	22	270



► **GATE VALVES,**
NODULAR CAST IRON BODY, BRONZE TRIM, FIGURE 317 - DIN PN10
WITH LR CLASS CERTIFICATE

DN	Code	Flange OD	PCD	Holes no. x dia Face to Face		
40	MV755661	150	110	4	18	140
50	MV755662	165	125	4	18	150
65	MV755663	185	145	4	18	170
80	MV755664	200	160	8	18	180
100	MV755665	220	180	8	18	190
125	MV755666	250	210	8	22	200
150	MV755667	285	240	8	22	210
200	MV755668	340	295	8	22	230
250	MV755669	395	350	12	22	250
300	MV755670	445	400	12	22	270





► **STEAM TRAPS, JIS 16K**

FLANGED TYPE, FCD450 BODY, STAINLESS STEEL TRIM, WITH DRAIN VALVE

DN	Code	Flange OD	PCD	Holes no. x dia Face to Face		
15	MV752491	95	70	4	15	136
20	MV752492	100	75	4	15	140
25	MV752493	125	90	4	19	150
32	MV752494	135	100	4	19	190
40	MV752495	140	105	4	19	260
50	MV752496	155	120	4	19	260



► **Y - STRAINERS, JIS 10K**

FLANGED TYPE, FCD450 BODY, STAINLESS STEEL TRIM

DN	Code	Flange OD	PCD	Holes no. x dia Face to Face		
50	MV752462	155	120	4	19	220
65	MV752463	175	140	4	19	270
80	MV752464	185	150	8	19	290
100	MV752465	210	175	8	19	350
125	MV752466	250	210	8	23	390



► **SWING CHECK VALVES, F-7372, JIS 5K**

CAST IRON BODY, BRONZE TRIM

DN	Code	Flange OD	PCD	Holes no. x dia Face to Face		
50	MV751421	130	105	4	15	190
65	MV751422	155	130	4	15	220
80	MV751423	180	145	4	19	250
100	MV751424	200	165	8	19	280
125	MV751425	235	200	8	19	330
150	MV751426	265	230	8	19	380



► **SWING CHECK VALVES, F-7373, JIS 10K**

CAST IRON BODY, BRONZE TRIM

DN	Code	Flange OD	PCD	Holes no. x dia Face to Face		
50	MV751431	155	120	4	19	210
65	MV751432	175	140	4	19	240
80	MV751433	185	150	8	19	270
100	MV751434	210	175	8	19	300
125	MV751435	250	210	8	23	350
150	MV751436	280	240	8	23	400

► **SWING CHECK VALVES,**

CAST IRON BODY, BRONZE TRIM, METAL SEATED DIN PN10/16 FLANGED

DN	Code	Flange OD	PCD	Holes no. x diaFace to Face		
40	MV755901	150	110	4	18	180
50	MV755902	165	125	4	18	200
65	MV755903	185	145	4	18	240
80	MV755904	200	160	8	18	260
100	MV755905	220	180	8	18	300
125	MV755906	250	210	8	18	350
150	MV755907	285	240	8	22	400

23



► **MUD BOXES WITH STAINLESS STEEL BASKET,**

BRONZE DRAIN PLUG, FIG.1187 DIN PN16 FLANGED

DN	Code	Flange OD	PCD	Holes no. x diaFace to Face		
40	MV872065	150	110	4	18	200
50	MV872066	165	125	4	18	230
65	MV872067	185	145	4	18	290
80	MV872068	200	160	8	18	310
100	MV872069	220	180	8	18	350
125	MV872070	250	210	8	18	400
150	MV872071	285	240	8	22	480





▶ **QUICK CLOSING GLOBE VALVES, JIS 5K F7399**
BRONZE BODY & TRIM - WITH DNV-GL CLASS CERTIFICATE

DN	Code	Flange OD	PCD	Holes no. x dia Face to Face	
15	MV87450115	80	60	4	12 130
20	MV87450120	85	65	4	12 130
25	MV874501	95	75	4	12 130
32	MV87450132	115	90	4	15 170
40	MV874502	120	95	4	15 170



▶ **QUICK CLOSING ANGLE VALVES, JIS 5K F7399-A**
BRONZE BODY & TRIM - WITH DNV-GL CLASS CERTIFICATE

DN	Code	Flange OD	PCD	Holes no. x dia Center to Face	
15	MV87452115	80	60	4	12 70
20	MV87452120	85	65	4	12 85
25	MV874521	95	75	4	12 85
32	MV87452132	115	90	4	15 100
40	MV874522	120	95	4	15 100



▶ **QUICK CLOSING GLOBE VALVES, JIS 5K F7399**
CAST STEEL BODY, STAINLESS STEEL TRIM - WITH DNV-GL CLASS CERTIFICATE

DN	Code	Flange OD	PCD	Holes no. x dia Face to Face	
50	MV874503	130	105	4	15 220
65	MV874504	155	130	4	15 270
80	MV874505	180	145	4	19 300
100	MV874506	200	165	8	19 350
125	MV874507	235	200	8	19 420
150	MV874508	265	230	8	19 490
200	MV874509	320	230	8	19 570



▶ **QUICK CLOSING ANGLE VALVES, JIS 5K F7399-A**
CAST STEEL BODY, STAINLESS STEEL TRIM - WITH DNV-GL CLASS CERTIFICATE

DN	Code	Flange OD	PCD	Holes no. x dia Center to Face	
50	MV874523	130	105	4	15 120
65	MV874524	155	130	4	15 130
80	MV874525	180	145	4	19 140
100	MV874526	200	165	8	19 160
125	MV874527	235	200	8	19 170
150	MV874528	265	230	8	19 205
200	MV874529	320	230	8	19 220

► **QUICK CLOSING GLOBE VALVES, F7399 JIS 10K**
BRONZE BODY & TRIM - WITH DNV-GL CLASS CERTIFICATE

DN	Code	Flange OD	PCD	Holes no. x dia	Face to Face
15	MV87450115K10	95	70	4 15	130
20	MV87450120K10	100	75	4 15	130
25	MV874501K10	125	90	4 19	130
32	MV87450132K10	135	100	4 19	170
40	MV874502K10	140	105	4 19	170



► **QUICK CLOSING ANGLE VALVES, F7399-A JIS 10K**
BRONZE BODY & TRIM - WITH DNV-GL CLASS CERTIFICATE

DN	Code	Flange OD	PCD	Holes no. x dia	Center to Face
15	MV87452115K10	95	70	4 15	70
20	MV87452120K10	100	75	4 15	85
25	MV874521K10	125	90	4 19	85
32	MV87452132K10	135	100	4 19	100
40	MV874522K10	140	105	4 19	100



► **QUICK CLOSING GLOBE VALVES, F7399 JIS 10K**
CAST STEEL BODY, STAINLESS STEEL TRIM - WITH DNV-GL CLASS CERTIFICATE

DN	Code	Flange OD	PCD	Holes no. x dia	Face to Face
50	MV874503K10	155	120	4 19	220
65	MV874504K10	175	140	4 19	270
80	MV874505K10	185	150	8 19	300
100	MV874506K10	210	175	8 19	350
125	MV874507K10	250	210	8 23	420
150	MV874508K10	280	240	8 23	490
200	MV874509K10	330	290	12 23	570



► **QUICK CLOSING ANGLE VALVES, F7399-A JIS 10K**
CAST STEEL BODY, STAINLESS STEEL TRIM - WITH DNV-GL CLASS CERTIFICATE

DN	Code	Flange OD	PCD	Holes no. x dia	Center to Face
50	MV874523K10	155	120	4 19	120
65	MV874524K10	175	140	4 19	130
80	MV874525K10	185	150	8 19	140
100	MV874526K10	210	175	8 19	160
125	MV874527K10	250	210	8 23	180
150	MV874528K10	280	240	8 23	205
200	MV874529K10	330	290	12 23	230





▶ **QUICK CLOSING GLOBE VALVES,**
NODULAR CAST IRON BODY & S.S TRIM, FIGURE 100 DIN PN16 FLANGED
WITH LR CLASS CERTIFICATE

DN	Code	Flange OD	PCD	Holes no. x dia Face to Face	
15	MV874621	95	65	4	14 130
20	MV874622	105	75	4	14 150
25	MV874623	115	85	4	14 160
32	MV874624	140	100	4	18 180
40	MV874625	150	110	4	18 200
50	MV874626	165	125	4	18 230
65	MV874627	185	145	4	18 290
80	MV874628	200	160	8	18 310
100	MV874629	220	180	8	18 350
125	MV874630	250	210	8	18 400
150	MV874645	285	240	8	22 480

▶ **QUICK CLOSING ANGLE VALVES,**
NODULAR CAST IRON BODY & S.S TRIM, FIGURE 100 DIN PN16 FLANGED
WITH LR CLASS CERTIFICATE



DN	Code	Flange OD	PCD	Holes no. x dia Center to Face	
15	MV874631	95	65	4	14 90
20	MV874632	105	75	4	14 95
25	MV874633	115	85	4	14 100
32	MV874634	140	100	4	18 105
40	MV874635	150	110	4	18 115
50	MV874636	165	125	4	18 125
65	MV874637	185	145	4	18 145
80	MV874638	200	160	8	18 155
100	MV874639	220	180	8	18 175
125	MV874640	250	210	8	18 200
150	MV874641	285	240	8	22 225

► **BUTTERFLY VALVES, WAFER TYPE, LOCK LEVER OPERATED**

SUITABLE FOR MOUNTING BETWEEN JIS 5K / 10K FLANGES

DN	Code	Body	Stem	Disc	Seat	L
50	MV752201	FC 200	Stainless Steel	Stainless Steel	NBR	43
65	MV752202	FC 200	Stainless Steel	Stainless Steel	NBR	46
80	MV752203	FC 200	Stainless Steel	Stainless Steel	NBR	46
100	MV752204	FC 200	Stainless Steel	Stainless Steel	NBR	52
125	MV752205	FC 200	Stainless Steel	Stainless Steel	NBR	56
150	MV752206	FC 200	Stainless Steel	Stainless Steel	NBR	56



► **BUTTERFLY VALVES, WAFER TYPE, WORM GEAR OPERATED**

SUITABLE FOR MOUNTING BETWEEN JIS 5K / 10K FLANGES

DN	Code	Body	Stem	Disc	Seat	L
65	MV752212	FC 200	Stainless Steel	Stainless Steel	NBR	46
80	MV752213	FC 200	Stainless Steel	Stainless Steel	NBR	46
100	MV752214	FC 200	Stainless Steel	Stainless Steel	NBR	52
125	MV752215	FC 200	Stainless Steel	Stainless Steel	NBR	56
150	MV752216	FC 200	Stainless Steel	Stainless Steel	NBR	56
200	MV752217	FC 200	Stainless Steel	Stainless Steel	NBR	60
250	MV752218	FC 200	Stainless Steel	Stainless Steel	NBR	68
300	MV752219	FC 200	Stainless Steel	Stainless Steel	NBR	78
350	MV752220	FC 200	Stainless Steel	Stainless Steel	NBR	78
400	MV752221	FC 200	Stainless Steel	Stainless Steel	NBR	102
450	MV752222	FC 200	Stainless Steel	Stainless Steel	NBR	114
500	MV752223	FC 200	Stainless Steel	Stainless Steel	NBR	127



► **BUTTERFLY VALVES, WAFER TYPE, BARESHAFT**

SUITABLE FOR MOUNTING BETWEEN JIS 5K / 10K FLANGES

DN	Code	Body	Stem	Disc	Seat	L
50	MV752201ALB	FC 200	Stainless Steel	ALU-BRONZE	NBR	43
65	MV752202ALB	FC 200	Stainless Steel	ALU-BRONZE	NBR	46
80	MV752203ALB	FC 200	Stainless Steel	ALU-BRONZE	NBR	46
100	MV752204ALB	FC 200	Stainless Steel	ALU-BRONZE	NBR	52
125	MV752205ALB	FC 200	Stainless Steel	ALU-BRONZE	NBR	56
150	MV752206ALB	FC 200	Stainless Steel	ALU-BRONZE	NBR	56
200	MV752217ALB	FC 200	Stainless Steel	ALU-BRONZE	NBR	60
250	MV752218ALB	FC 200	Stainless Steel	ALU-BRONZE	NBR	68
300	MV752219ALB	FC 200	Stainless Steel	ALU-BRONZE	NBR	78
350	MV752220ALB	FC 200	Stainless Steel	ALU-BRONZE	NBR	78



***TOP FLANGE & SHAFT DIMENSIONS WILL BE MODIFIED AS PER DEMAND**



► **BUTTERFLY VALVES, WAFER TYPE, BARESHAFT**
KEYSTONE VALVE KOREA, FIG 1 - JIS 5K

DN	Code	Body	Stem	Disc	Seat	L
50	MV75KV2201	FC 200	Stainless Steel	Alu-Bronze	NBR	41
65	MV75KV2202	FC 200	Stainless Steel	Alu-Bronze	NBR	45
80	MV75KV2203	FC 200	Stainless Steel	Alu-Bronze	NBR	45
100	MV75KV2204	FC 200	Stainless Steel	Alu-Bronze	NBR	51
125	MV75KV2205	FC 200	Stainless Steel	Alu-Bronze	NBR	54
150	MV75KV2206	FC 200	Stainless Steel	Alu-Bronze	NBR	54
200	MV75KV2207	FC 200	Stainless Steel	Alu-Bronze	NBR	64
250	MV75KV2208	FC 200	Stainless Steel	Alu-Bronze	NBR	64
300	MV75KV2209	FC 200	Stainless Steel	Alu-Bronze	NBR	76
350	MV75KV2210	FC 200	Stainless Steel	Alu-Bronze	NBR	76
400	MV75KV2211	FC 200	Stainless Steel	Alu-Bronze	NBR	102
450	MV75KV2212	FC 200	Stainless Steel	Alu-Bronze	NBR	108



► **BUTTERFLY VALVES, LUG TYPE, BARESHAFT**
KEYSTONE VALVE KOREA, FIG 2 - JIS 5K

DN	Code	Body	Stem	Disc	Seat	L
50	MV75KV2312	FC 200	Stainless Steel	Alu-Bronze	NBR	41
65	MV75KV2313	FC 200	Stainless Steel	Alu-Bronze	NBR	45
80	MV75KV2314	FC 200	Stainless Steel	Alu-Bronze	NBR	45
100	MV75KV2315	FC 200	Stainless Steel	Alu-Bronze	NBR	51
125	MV75KV2316	FC 200	Stainless Steel	Alu-Bronze	NBR	54
150	MV75KV2317	FC 200	Stainless Steel	Alu-Bronze	NBR	54
200	MV75KV2318	FC 200	Stainless Steel	Alu-Bronze	NBR	64
250	MV75KV2319	FC 200	Stainless Steel	Alu-Bronze	NBR	64
300	MV75KV2320	FC 200	Stainless Steel	Alu-Bronze	NBR	76
350	MV75KV23350	FC 200	Stainless Steel	Alu-Bronze	NBR	76
400	MV75KV23400	FC 200	Stainless Steel	Alu-Bronze	NBR	102
450	MV75KV23450	FC 200	Stainless Steel	Alu-Bronze	NBR	108

*BELOW VALVES ARE ALSO AVAILABLE UPON REQUEST

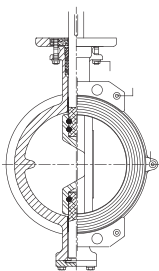


FIG.360
WAFER TYPE BUTTERFLY VALVE

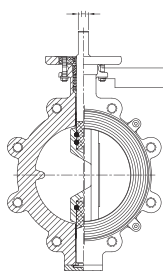


FIG.362
LUG TYPE BUTTERFLY VALVE

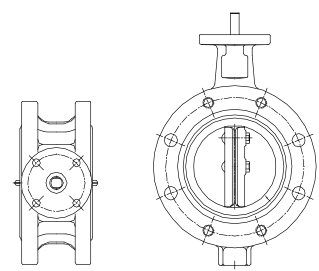


FIG.V11
FLANGE TYPE BUTTERFLY VALVE

▶ KEYSTONE VALVE KOREA



FIG 360 / FIG 362 - RTFE SEAT RINGS *WITH BACKING RINGS



FIG 360 / FIG 362 - NBR SEAT RINGS *WITH BACKING RINGS



FIG 1 / 2 / 990 - NBR SEAT RINGS



FIG V11 - NBR SEAT RINGS



STEM FOR FIG 1 / 2 / V10 / V11



PACKING FOR FIG 1 / 2 / V10 / V11



DISC SCREW & O-RING SETS FOR FIG 1 / 2 / V10 / V11



BUSHING FOR FIG 1 / 2 / V10 / V11



*** SPARES OF BELOW MAKERS ARE ALSO AVAILABLE UPON REQUEST**

- ACE VALVE
- NAKAKITA SEISAKUSHO
- WESTAD
- HAN YANG VALVE KOREA (HYV)
- DALIAN VALVE

30



DNV-GL

► **BUTTERFLY VALVES, LUG TYPE - JIS 5K**
LOCK LEVER OPERATED, WITH DNV-GL CLASS CERTIFICATE

DN	Code	Body	Stem	Disc	Seat	PCD	Holes x dia	L
40	MV752311	FCD 450	Stainless Steel	Alu-Bronze	NBR	95	4 M12	40
50	MV752312	FCD 450	Stainless Steel	Alu-Bronze	NBR	105	4 M12	43
65	MV752313	FCD 450	Stainless Steel	Alu-Bronze	NBR	130	4 M12	46
80	MV752314	FCD 450	Stainless Steel	Alu-Bronze	NBR	145	4 M16	46
100	MV752315	FCD 450	Stainless Steel	Alu-Bronze	NBR	165	8 M16	52
125	MV752316	FCD 450	Stainless Steel	Alu-Bronze	NBR	200	8 M16	56

► **BUTTERFLY VALVES, LUG TYPE - JIS 5K**
WORM GEAR OPERATED, WITH DNV-GL CLASS CERTIFICATE

DN	Code	Body	Stem	Disc	Seat	PCD	Holes x dia	L
150	MV752317	FCD 450	Stainless Steel	Alu-Bronze	NBR	230	8 M16	56
200	MV752318	FCD 450	Stainless Steel	Alu-Bronze	NBR	280	8 M20	60
250	MV752319	FCD 450	Stainless Steel	Alu-Bronze	NBR	345	12 M20	68
300	MV752320	FCD 450	Stainless Steel	Alu-Bronze	NBR	390	12 M20	78
350	MV7523350	FCD 450	Stainless Steel	Alu-Bronze	NBR	435	12 M22	78
400	MV7523400	FCD 450	Stainless Steel	Alu-Bronze	NBR	495	16 M22	102
450	MV7523450	FCD 450	Stainless Steel	Alu-Bronze	NBR	555	16 M22	114



DNV-GL

► **BUTTERFLY VALVES, LUG TYPE - JIS 10K**
LOCK LEVER OPERATED, WITH DNV-GL CLASS CERTIFICATE

DN	Code	Body	Stem	Disc	Seat	PCD	Holes x dia	L
40	MV752321	FCD 450	Stainless Steel	Alu-Bronze	NBR	105	4 M16	40
50	MV752322	FCD 450	Stainless Steel	Alu-Bronze	NBR	120	4 M16	43
65	MV752323	FCD 450	Stainless Steel	Alu-Bronze	NBR	140	4 M16	46
80	MV752324	FCD 450	Stainless Steel	Alu-Bronze	NBR	150	8 M16	46
100	MV752325	FCD 450	Stainless Steel	Alu-Bronze	NBR	175	8 M16	52
125	MV752326	FCD 450	Stainless Steel	Alu-Bronze	NBR	210	8 M20	56



DNV-GL

► **BUTTERFLY VALVES, LUG TYPE - JIS 10K**
WORM GEAR OPERATED, WITH DNV-GL CLASS CERTIFICATE

DN	Code	Body	Stem	Disc	Seat	PCD	Holes x dia	L
150	MV752327	FCD 450	Stainless Steel	Alu-Bronze	NBR	240	8 M20	56
200	MV752328	FCD 450	Stainless Steel	Alu-Bronze	NBR	290	12 M20	60
250	MV752329	FCD 450	Stainless Steel	Alu-Bronze	NBR	355	12 M22	68



DNV-GL

► **BUTTERFLY VALVES, LUG TYPE - JIS 5K**

LOCK LEVER OPERATED, WITHOUT CLASS CERTIFICATE

DN	Code	Body	Stem	Disc	Seat	PCD	Holes x dia	L
40	MV752311FC	FC 200	Stainless Steel	Alu-Bronze	NBR	95	4 M12	40
50	MV752312FC	FC 200	Stainless Steel	Alu-Bronze	NBR	105	4 M12	43
65	MV752313FC	FC 200	Stainless Steel	Alu-Bronze	NBR	130	4 M12	46
80	MV752314FC	FC 200	Stainless Steel	Alu-Bronze	NBR	145	4 M16	46
100	MV752315FC	FC 200	Stainless Steel	Alu-Bronze	NBR	165	8 M16	52
125	MV752316FC	FC 200	Stainless Steel	Alu-Bronze	NBR	200	8 M16	56



► **BUTTERFLY VALVES, LUG TYPE - JIS 5K**

WORM GEAR OPERATED, WITHOUT CLASS CERTIFICATE

DN	Code	Body	Stem	Disc	Seat	PCD	Holes x dia	L
150	MV752317FC	FC 200	Stainless Steel	Alu-Bronze	NBR	230	8 M16	56
200	MV752318FC	FC 200	Stainless Steel	Alu-Bronze	NBR	280	8 M20	60
250	MV752319FC	FC 200	Stainless Steel	Alu-Bronze	NBR	345	12 M20	68
300	MV752320FC	FC 200	Stainless Steel	Alu-Bronze	NBR	390	12 M20	78
350	MV7523350FC	FC 200	Stainless Steel	Alu-Bronze	NBR	435	12 M22	78



► **BUTTERFLY VALVES, LUG TYPE - JIS 10K**

LOCK LEVER OPERATED, WITHOUT CLASS CERTIFICATE

DN	Code	Body	Stem	Disc	Seat	PCD	Holes x dia	L
40	MV752321FC	FC 200	Stainless Steel	Alu-Bronze	NBR	105	4 M16	40
50	MV752322FC	FC 200	Stainless Steel	Alu-Bronze	NBR	120	4 M16	43
65	MV752323FC	FC 200	Stainless Steel	Alu-Bronze	NBR	140	4 M16	46
80	MV752324FC	FC 200	Stainless Steel	Alu-Bronze	NBR	150	8 M16	46
100	MV752325FC	FC 200	Stainless Steel	Alu-Bronze	NBR	175	8 M16	52
125	MV752326FC	FC 200	Stainless Steel	Alu-Bronze	NBR	210	8 M20	56



► **BUTTERFLY VALVES, LUG TYPE - JIS 10K**

WORM GEAR OPERATED, WITHOUT CLASS CERTIFICATE

DN	Code	Body	Stem	Disc	Seat	PCD	Holes x dia	L
150	MV752327FC	FC 200	Stainless Steel	Alu-Bronze	NBR	240	8 M20	56
200	MV752328FC	FC 200	Stainless Steel	Alu-Bronze	NBR	290	12 M20	60
250	MV752329FC	FC 200	Stainless Steel	Alu-Bronze	NBR	355	12 M20	68



► **BUTTERFLY VALVES, DOUBLE FLANGED TYPE, JIS 10K, WORM GEAR OPERATED**
ISO FACE TO FACE SHORT PATTERN, UNDRILLED FLANGES - WITH DNV-GL CLASS CERTIFICATE

DN	Code	Body	Stem	Disc	Seat	Flanges	L
100	MV752340	FCD 450	Stainless Steel	Alu-Bronze	NBR	TO BE DRILLED AS 5K OR 10K	52
125	MV752341	FCD 450	Stainless Steel	Alu-Bronze	NBR	TO BE DRILLED AS 5K OR 10K	56
150	MV752342	FCD 450	Stainless Steel	Alu-Bronze	NBR	TO BE DRILLED AS 5K OR 10K	56
200	MV752343	FCD 450	Stainless Steel	Alu-Bronze	NBR	TO BE DRILLED AS 5K OR 10K	60
250	MV752344	FCD 450	Stainless Steel	Alu-Bronze	NBR	TO BE DRILLED AS 5K OR 10K	68
300	MV752345	FCD 450	Stainless Steel	Alu-Bronze	NBR	TO BE DRILLED AS 5K OR 10K	78
350	MV752346	FCD 450	Stainless Steel	Alu-Bronze	NBR	TO BE DRILLED AS 5K OR 10K	78
400	MV752347	FCD 450	Stainless Steel	Alu-Bronze	NBR	TO BE DRILLED AS 5K OR 10K	102
450	MV752348	FCD 450	Stainless Steel	Alu-Bronze	NBR	TO BE DRILLED AS 5K OR 10K	114
500	MV752349	FCD 450	Stainless Steel	Alu-Bronze	NBR	TO BE DRILLED AS 5K OR 10K	127
600	MV752350	FCD 450	Stainless Steel	Alu-Bronze	NBR	TO BE DRILLED AS 5K OR 10K	154
700	MV752351	FCD 450	Stainless Steel	Alu-Bronze	NBR	TO BE DRILLED AS 5K OR 10K	165

► **BUTTERFLY VALVES, DOUBLE FLANGED TYPE, JIS 10K, WORM GEAR OPERATED**
JIS F7480 FACE TO FACE, LONG PATTERN, UNDRILLED FLANGES - WITH DNV-GL CLASS CERTIFICATE

DN	Code	Body	Stem	Disc	Seat	Flanges	L
100	MV752360	FCD 450	Stainless Steel	Alu-Bronze	NBR	TO BE DRILLED AS 5K OR 10K	60
125	MV752361	FCD 450	Stainless Steel	Alu-Bronze	NBR	TO BE DRILLED AS 5K OR 10K	100
150	MV752362	FCD 450	Stainless Steel	Alu-Bronze	NBR	TO BE DRILLED AS 5K OR 10K	100
200	MV752363	FCD 450	Stainless Steel	Alu-Bronze	NBR	TO BE DRILLED AS 5K OR 10K	100
250	MV752364	FCD 450	Stainless Steel	Alu-Bronze	NBR	TO BE DRILLED AS 5K OR 10K	110
300	MV752365	FCD 450	Stainless Steel	Alu-Bronze	NBR	TO BE DRILLED AS 5K OR 10K	110
350	MV752366	FCD 450	Stainless Steel	Alu-Bronze	NBR	TO BE DRILLED AS 5K OR 10K	120
400	MV752367	FCD 450	Stainless Steel	Alu-Bronze	NBR	TO BE DRILLED AS 5K OR 10K	130
450	MV752368	FCD 450	Stainless Steel	Alu-Bronze	NBR	TO BE DRILLED AS 5K OR 10K	150
500	MV752369	FCD 450	Stainless Steel	Alu-Bronze	NBR	TO BE DRILLED AS 5K OR 10K	160
600	MV752370	FCD 450	Stainless Steel	Alu-Bronze	NBR	TO BE DRILLED AS 5K OR 10K	170
700	MV752371	FCD 450	Stainless Steel	Alu-Bronze	NBR	TO BE DRILLED AS 5K OR 10K	180



► **DUO CHECK VALVES, WAFER TYPE - JIS 5K**

DN	Code	Body	Disc	Seat	O.D.	L
100	MV751471	FCD 450	ALU-BRONZE	NBR	146	73
125	MV751472	FCD 450	ALU-BRONZE	NBR	181	86
150	MV751473	FCD 450	ALU-BRONZE	NBR	211	98
200	MV751474	FCD 450	ALU-BRONZE	NBR	257	127
250	MV751475	FCD 450	ALU-BRONZE	NBR	322	146
300	MV751476	FCD 450	ALU-BRONZE	NBR	367	181
350	MV751477	FCD 450	ALU-BRONZE	NBR	410	184
400	MV751478	FCD 450	ALU-BRONZE	NBR	470	191
450	MV751479	FCD 450	ALU-BRONZE	NBR	530	203

► **DUO CHECK VALVES, WAFER TYPE - JIS 10K**

DN	Code	Body	Disc	Seat	O.D.	L
100	MV751481	FCD 450	ALU-BRONZE	NBR	156	73
125	MV751482	FCD 450	ALU-BRONZE	NBR	187	86
150	MV751483	FCD 450	ALU-BRONZE	NBR	217	98
200	MV751484	FCD 450	ALU-BRONZE	NBR	267	127
250	MV751485	FCD 450	ALU-BRONZE	NBR	330	146
300	MV751486	FCD 450	ALU-BRONZE	NBR	375	181
350	MV751487	FCD 450	ALU-BRONZE	NBR	420	184
400	MV751488	FCD 450	ALU-BRONZE	NBR	483	191
450	MV751489	FCD 450	ALU-BRONZE	NBR	538	203



***FLANGED TYPE AVAILABLE UPON REQUEST**



► **BUTTERFLY VALVES, WAFER TYPE,**
WATER TYPE, JIS / DIN LOCK LEVER OPERATED, STAINLESS STEEL DISC

DN	Code	Body	Stem	Disc	Seat	L
50	MV752201	FC 200	Stainless Steel	Stainless Steel	NBR	43
65	MV752202	FC 200	Stainless Steel	Stainless Steel	NBR	46
80	MV752203	FC 200	Stainless Steel	Stainless Steel	NBR	46
100	MV752204	FC 200	Stainless Steel	Stainless Steel	NBR	52
125	MV752205	FC 200	Stainless Steel	Stainless Steel	NBR	56
150	MV752206	FC 200	Stainless Steel	Stainless Steel	NBR	56



► **BUTTERFLY VALVES, WAFER TYPE,**
JIS / DIN WORM GEAR OPERATED, STAINLESS STEEL DISC

DN	Code	Body	Stem	Disc	Seat	L
65	MV752212	FC 200	Stainless Steel	Stainless Steel	NBR	46
80	MV752213	FC 200	Stainless Steel	Stainless Steel	NBR	46
100	MV752214	FC 200	Stainless Steel	Stainless Steel	NBR	52
125	MV752215	FC 200	Stainless Steel	Stainless Steel	NBR	56
150	MV752216	FC 200	Stainless Steel	Stainless Steel	NBR	56
200	MV752217	FC 200	Stainless Steel	Stainless Steel	NBR	60
250	MV752218	FC 200	Stainless Steel	Stainless Steel	NBR	68
300	MV752219	FC 200	Stainless Steel	Stainless Steel	NBR	78
350	MV752220	FC 200	Stainless Steel	Stainless Steel	NBR	78
400	MV752221	FC 200	Stainless Steel	Stainless Steel	NBR	102
450	MV752222	FC 200	Stainless Steel	Stainless Steel	NBR	114
500	MV752223	FC 200	Stainless Steel	Stainless Steel	NBR	127



► **BUTTERFLY VALVES, WAFER TYPE,**
DIN PN16 LOCK LEVER OPERATED, ALU-BRONZE DISC

DN	Code	Body	Stem	Disc	Seat	L
50	MV752201ALB	GGG40.3	Stainless Steel	ALU - BRONZE	NBR	43
65	MV752202ALB	GGG40.3	Stainless Steel	ALU - BRONZE	NBR	46
80	MV752203ALB	GGG40.3	Stainless Steel	ALU - BRONZE	NBR	46
100	MV752204ALB	GGG40.3	Stainless Steel	ALU - BRONZE	NBR	52
125	MV752205ALB	GGG40.3	Stainless Steel	ALU - BRONZE	NBR	56
150	MV752206ALB	GGG40.3	Stainless Steel	ALU - BRONZE	NBR	56
200	MV752207ALB	GGG40.3	Stainless Steel	ALU - BRONZE	NBR	60
250	MV752208ALB	GGG40.3	Stainless Steel	ALU - BRONZE	NBR	68



► **BUTTERFLY VALVES, WAFER TYPE,**
DIN PN16 WORM GEAR OPERATED, ALU-BRONZE DISC

DN	Code	Body	Stem	Disc	Seat	L
300	MV752219ALB	GGG40.3	Stainless Steel	ALU - BRONZE	NBR	78
350	MV752220ALB	GGG40.3	Stainless Steel	ALU - BRONZE	NBR	78
400	MV752221ALB	GGG40.3	Stainless Steel	ALU - BRONZE	NBR	102
450	MV752222ALB	GGG40.3	Stainless Steel	ALU - BRONZE	NBR	114
500	MV752223ALB	GGG40.3	Stainless Steel	ALU - BRONZE	NBR	127

► **BUTTERFLY VALVES, LUG TYPE,**
DIN PN16 LOCK LEVER OPERATED, WITH LR CLASS CERTIFICATE

DN	Code	Body	Stem	Disc	Seat	PCD	Holes x dia		L
50	MV754446	GGG40.3	Stainless Steel	Alu-Bronze	NBR	125	4	18	43
65	MV754447	GGG40.3	Stainless Steel	Alu-Bronze	NBR	145	4	18	46
80	MV754448	GGG40.3	Stainless Steel	Alu-Bronze	NBR	160	8	18	46
100	MV754449	GGG40.3	Stainless Steel	Alu-Bronze	NBR	180	8	18	52
125	MV754450	GGG40.3	Stainless Steel	Alu-Bronze	NBR	210	8	18	56
150	MV754451	GGG40.3	Stainless Steel	Alu-Bronze	NBR	240	8	22	56
200	MV754452	GGG40.3	Stainless Steel	Alu-Bronze	NBR	295	12	22	60



► **BUTTERFLY VALVES, LUG TYPE,**
DIN PN10, WORM GEAR OPERATED, WITH LR CLASS CERTIFICATE

DN	Code	Body	Stem	Disc	Seat	PCD	Holes x dia		L
200	MV754452PN10	GGG40.3	Stainless Steel	Alu-Bronze	NBR	295	8	22	60
250	MV754453	GGG40.3	Stainless Steel	Alu-Bronze	NBR	350	12	22	68
300	MV754454	GGG40.3	Stainless Steel	Alu-Bronze	NBR	400	12	22	78
350	MV754455	GGG40.3	Stainless Steel	Alu-Bronze	NBR	460	16	22	78



► **BUTTERFLY VALVES, DOUBLE FLANGED TYPE, SERIES 55**
DIN PN16 LOCK LEVER & WORM GEAR OPERATED, WITH LR CLASS CERTIFICATE

DN	Code	Body	Stem	Disc	Seat	PCD	Holes x dia		L
100	MV754504	GGG40.3	Stainless Steel	Alu-Bronze	NBR	180	8	18	52
125	MV754505	GGG40.3	Stainless Steel	Alu-Bronze	NBR	210	8	18	56
150	MV754506	GGG40.3	Stainless Steel	Alu-Bronze	NBR	240	8	22	56
200	MV754507	GGG40.3	Stainless Steel	Alu-Bronze	NBR	295	8	22	60
250	MV754508	GGG40.3	Stainless Steel	Alu-Bronze	NBR	350	12	22	68
300	MV754509	GGG40.3	Stainless Steel	Alu-Bronze	NBR	400	12	22	78
350	MV754510	GGG40.3	Stainless Steel	Alu-Bronze	NBR	460	16	22	78
400	MV754511	GGG40.3	Stainless Steel	Alu-Bronze	NBR	515	16	26	102
450	MV754512	GGG40.3	Stainless Steel	Alu-Bronze	NBR	565	20	26	114
500	MV754513	GGG40.3	Stainless Steel	Alu-Bronze	NBR	620	20	26	127



► **BUTTERFLY VALVES, DOUBLE FLANGED TYPE,**
WORM GEAR OPERATED, 10 BAR, ISO 5752 FACE TO FACE , UNDRILLED, WITH DNV-GL CLASS CERTIFICATE

DN	Code	Body	Stem	Disc	Seat	Flanges	L
100	MV752340	GGG40.3	Stainless Steel	Alu-Bronze	NBR	CAN BE DRILLED AS PN6 / PN10	52
125	MV752341	GGG40.3	Stainless Steel	Alu-Bronze	NBR	CAN BE DRILLED AS PN6 / PN10	56
150	MV752342	GGG40.3	Stainless Steel	Alu-Bronze	NBR	CAN BE DRILLED AS PN6 / PN10	56
200	MV752343	GGG40.3	Stainless Steel	Alu-Bronze	NBR	CAN BE DRILLED AS PN6 / PN10	60
250	MV752344	GGG40.3	Stainless Steel	Alu-Bronze	NBR	CAN BE DRILLED AS PN6 / PN10	68
300	MV752345	GGG40.3	Stainless Steel	Alu-Bronze	NBR	CAN BE DRILLED AS PN6 / PN10	78
350	MV752346	GGG40.3	Stainless Steel	Alu-Bronze	NBR	CAN BE DRILLED AS PN6 / PN10	78
400	MV752347	GGG40.3	Stainless Steel	Alu-Bronze	NBR	CAN BE DRILLED AS PN6 / PN10	102
450	MV752348	GGG40.3	Stainless Steel	Alu-Bronze	NBR	CAN BE DRILLED AS PN6 / PN10	114
500	MV752349	GGG40.3	Stainless Steel	Alu-Bronze	NBR	CAN BE DRILLED AS PN6 / PN10	127
600	MV752350	GGG40.3	Stainless Steel	Alu-Bronze	NBR	CAN BE DRILLED AS PN6 / PN10	154
700	MV752351	GGG40.3	Stainless Steel	Alu-Bronze	NBR	CAN BE DRILLED AS PN6 / PN10	165



► **BUTTERFLY VALVES, DOUBLE FLANGED TYPE, SHORT SERIES 53**
LEVER OPERATED, DIN PN16 FLANGE HOLES - WITH LR CLASS CERTIFICATE

DN	Code	Body	Stem	Disc	Seat	PCD	Holes x dia	L
50	MV754581	GGG40.3	Stainless Steel	Alu-Bronze	NBR	125	4 18	108
65	MV754582	GGG40.3	Stainless Steel	Alu-Bronze	NBR	145	4 18	112
80	MV754583	GGG40.3	Stainless Steel	Alu-Bronze	NBR	160	8 18	114
100	MV754584	GGG40.3	Stainless Steel	Alu-Bronze	NBR	180	8 18	127
125	MV754585	GGG40.3	Stainless Steel	Alu-Bronze	NBR	210	8 18	140
150	MV754586	GGG40.3	Stainless Steel	Alu-Bronze	NBR	240	8 18	140

► **BUTTERFLY VALVES, DOUBLE FLANGED TYPE, SHORT SERIES 53**
WORM GEAR OPERATED, DIN PN10 FLANGE HOLES - WITH LR CLASS CERTIFICATE

DN	Code	Body	Stem	Disc	Seat	PCD	Holes x dia	L
200	MV754587	GGG40.3	Stainless Steel	Alu-Bronze	NBR	295	8 22	152
250	MV754588	GGG40.3	Stainless Steel	Alu-Bronze	NBR	350	12 22	165
300	MV754589	GGG40.3	Stainless Steel	Alu-Bronze	NBR	400	12 22	178
350	MV754590	GGG40.3	Stainless Steel	Alu-Bronze	NBR	465	16 22	190
400	MV754591	GGG40.3	Stainless Steel	Alu-Bronze	NBR	515	16 26	216
450	MV754592	GGG40.3	Stainless Steel	Alu-Bronze	NBR	565	20 26	222
500	MV754593	GGG40.3	Stainless Steel	Alu-Bronze	NBR	620	20 26	229
600	MV754594	GGG40.3	Stainless Steel	Alu-Bronze	NBR	725	20 30	267



STOCK POINTS

Istanbul | Singapore | Busan



38



► **GLOBE HOSE VALVES,**
BRONZE BODY & TRIM F-7334, JIS 5K FLANGED

DN	Code	Inlet 5K Flange OD	PCD	Holes no. x dia	Outlet
15	MV751701	80	60	4 12	Screwed End with Cap & Chain
25	MV751703	95	75	4 12	Screwed End with Cap & Chain



► **GLOBE HOSE VALVES,**
BRONZE BODY & TRIM F-7334, JIS 5K FLANGED

DN	Code	Inlet 5K Flange OD	PCD	Holes no. x dia	Outlet
40	MV751711	120	95	4 15	Nakajima Coupling, Cap & Chain
50	MV751716	130	105	4 15	Nakajima Coupling, Cap & Chain



► **ANGLE HOSE VALVES,**
BRONZE BODY & TRIM F-7334, JIS 5K FLANGED

DN	Code	Inlet 5K Flange OD	PCD	Holes no. x dia	Outlet
15	MV751706	80	60	4 12	Screwed End with Cap & Chain
25	MV751708	95	75	4 12	Screwed End with Cap & Chain



► **ANGLE HOSE VALVES,**
BRONZE BODY & TRIM F-7334, JIS 5K FLANGED

DN	Code	Inlet 5K Flange OD	PCD	Holes no. x dia	Outlet
40	MV751713	120	95	4 15	Nakajima Coupling, Cap & Chain
50	MV751721	130	105	4 15	Nakajima Coupling, Cap & Chain



► **GLOBE HOSE VALVES,**
CAST IRON BODY & BRONZE TRIM F-7333, JIS 5K FLANGED

DN	Code	Inlet 5K Flange OD	PCD	Holes no. x dia	Outlet
50	MV751731	130	105	4 15	Nakajima Coupling, Cap & Chain



► **ANGLE HOSE VALVES,**
CAST IRON BODY & BRONZE TRIM F-7333, JIS 5K FLANGED

DN	Code	Inlet 5K Flange OD	PCD	Holes no. x dia	Outlet
50	MV751735	130	105	4 15	Nakajima Coupling, Cap & Chain

► **GLOBE HOSE VALVES,**
BRONZE BODY & TRIM F-7334, JIS 10K FLANGED

DN	Code	Inlet 10K Flange OD	PCD	Holes no. x dia	Outlet
15	MV751702	95	70	4 15	Screwed End with Cap & Chain
25	MV751704	125	90	4 19	Screwed End with Cap & Chain



39

► **GLOBE HOSE VALVES,**
BRONZE BODY & TRIM F-7334, JIS 10K FLANGED

DN	Code	Inlet 10K Flange OD	PCD	Holes no. x dia	Outlet
40	MV751712	140	105	4 19	Nakajima Coupling, Cap & Chain
50	MV751717	155	120	4 19	Nakajima Coupling, Cap & Chain
65	MV751718	175	140	4 19	Nakajima Coupling, Cap & Chain



► **ANGLE HOSE VALVES,**
BRONZE BODY & TRIM F-7334, JIS 10K FLANGED

DN	Code	Inlet 10K Flange OD	PCD	Holes no. x dia	Outlet
15	MV751707	95	70	4 15	Screwed End with Cap & Chain
25	MV751709	125	90	4 19	Screwed End with Cap & Chain



► **ANGLE HOSE VALVES,**
BRONZE BODY & TRIM F-7334, JIS 10K FLANGED

DN	Code	Inlet 10K Flange OD	PCD	Holes no. x dia	Outlet
40	MV751714	140	105	4 19	Nakajima Coupling, Cap & Chain
50	MV751722	155	120	4 19	Nakajima Coupling, Cap & Chain
65	MV751723	175	140	4 19	Nakajima Coupling, Cap & Chain



► **GLOBE HOSE VALVES,**
CAST IRON BODY & BRONZE TRIM F-7333, JIS 10K FLANGED

DN	Code	Inlet 10K Flange OD	PCD	Holes no. x dia	Outlet
50	MV751732	155	120	4 19	Nakajima Coupling, Cap & Chain
65	MV751733	175	140	4 19	Nakajima Coupling, Cap & Chain



► **ANGLE HOSE VALVES,**
CAST IRON BODY & BRONZE TRIM F-7333, JIS 10K FLANGED

DN	Code	Inlet 10K Flange OD	PCD	Holes no. x dia	Outlet
50	MV751736	155	120	4 19	Nakajima Coupling, Cap & Chain
65	MV751737	175	140	4 19	Nakajima Coupling, Cap & Chain



► **GLOBE HOSE VALVES,**
BRONZE BODY & TRIM, FIGURE 911 DIN PN16 FLANGED

DN	Code	Inlet PN16 Flange OD	PCD	Holes no. x dia	L	Outlet
40	MV756051	150	110	4 18	165	BSPP 1 1/2" CAM DISTANCE: 52
50	MV756052	165	125	4 18	185	BSPP 2" CAM DISTANCE: 66
65	MV756053	185	145	4 18	220	BSPP 2 1/2" CAM DISTANCE: 81

► **ANGLE HOSE VALVES,**
BRONZE BODY & TRIM, FIGURE 912 DIN PN16 FLANGED

DN	Code	Inlet PN16 Flange OD	PCD	Holes no. x dia	L	Outlet
40	MV756055	150	110	4 18	90	BSPP 1 1/2" CAM DISTANCE: 52
50	MV756056	165	125	4 18	107	BSPP 2" CAM DISTANCE: 66
65	MV756057	185	145	4 18	112	BSPP 2 1/2" CAM DISTANCE: 81

* **VARIOUS COUPLINGS & CAPS ARE AVAILABLE**



GLOBE HOSE VALVES



ANGLE HOSE VALVES

THE RELIABLE CONNECTION





► **AIR VENT HEADS, JIS 5K FLANGED, CASTING TYPE**

FCD450 BODY, STAINLESS STEEL TRIM - WITH DNV TYPE APPROVAL CERTIFICATE
HOT DIP GALVANIZED, SUITABLE FOR USE AT BOTH OIL & WATER TANKS.

DN	Code	Flange OD	PCD	Holes no. x dia	Weight Kg
50	MV872301	130	105	4 15	8
65	MV872302	155	130	4 15	13
80	MV872303	180	145	4 19	17
100	MV872304	200	165	8 19	21
125	MV872305	235	200	8 19	27
150	MV872306	265	230	8 19	40
200	MV872307	320	280	8 23	62
250	MV872308	385	345	12 23	95
300	MV872309	430	390	12 23	125
350	MV872310	480	435	12 25	185

► **AIR VENT HEADS, JIS 5K FLANGED, WELDING TYPE**

SS400 BODY, POLYPROPYLENE DISC - WITH DNV TYPE APPROVAL CERTIFICATE
HOT DIP GALVANIZED, SUITABLE FOR USE AT BOTH OIL & WATER TANKS.



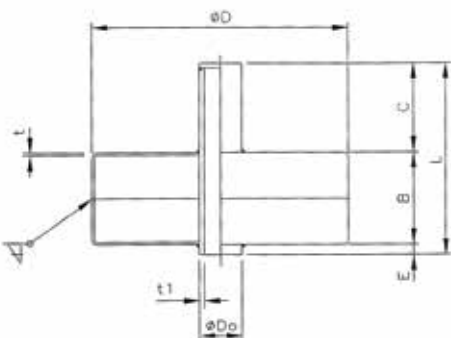
DN	Code	Flange OD	PCD	Holes no. x dia	Weight Kg
50	MV872301PP	130	105	4 15	11
65	MV872302PP	155	130	4 15	13
80	MV872303PP	180	145	4 19	16
100	MV872304PP	200	165	8 19	21
125	MV872305PP	235	200	8 19	29
150	MV872306PP	265	230	8 19	43
200	MV872307PP	320	280	8 23	66
250	MV872308PP	385	345	12 23	95
300	MV872309PP	430	390	12 23	125
350	MV872310PP	480	435	12 25	185

***** THIS IS THE NEW MODEL OF MAKER "KWANGSAN KOREA" , DESIGNED FOR PROVIDING LONGER LIFE TIME OF BODY AND FLOAT DISC AGAINST CORROSION.**

► **FLOAT DISCS SPARES,**

DIMENSION TABLE / UNIT: mm

NOMINAL DIA	$\phi D \pm 0.5$	ϕD_o	$\phi D \pm 0.5$	$t \pm 0.2$	$B \pm 0.5$	$C \pm 0.5$	$L \pm 0.5$	$E \pm 0.5$
50A	62	10.3	0.6	1.2	30	10	42	2
65A	77	10.3	0.6	1.2	30	22	54	2
80A	93	10.3	0.6	1.2	30	36	68	2
100A	113	13.8	0.7	1.65	30	30	62	2
125A	138	13.8	0.7	1.65	32	38	73	3
150A	166	13.8	1.0	1.65	32	48	83	3
200A	230	17.3	1.2	1.65	40	65	108	3
250A	275	17.3	1.2	1.65	40	83	126	3
300A	330	17.3	1.2	1.65	48	110	161	3
350A	361	17.3	1.5	1.65	48	125	176	3
400A	414	17.3	1.5	1.65	55	155	213	3
450A	460	17.3	1.5	1.65	60	147	210	3



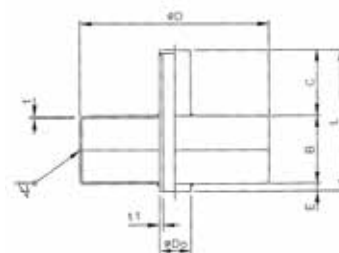
▶ **AIR VENT HEADS,**FLOAT DISC TYPE, FCD450 BODY, S.S. TRIM, PN10/16 FLANGED
DNV TYPE APPROVED

DN	Code	Flange OD	PCD	Holes no. x dia	
50	MV872340	165	125	4	18
65	MV872341	185	145	4	18
80	MV872342	200	160	8	18
100	MV872343	220	180	8	18
125	MV872344	250	210	8	18
150	MV872345	285	240	8	22
200	MV872346	340	295	8	22
250	MV872347	405	355	12	26

▶ **FLOAT DISCS SPARES,**

DIMENSION TABLE / UNIT: mm

NOMINAL DIA	$\phi D \pm 0.5$	ϕD_o	$\phi D \pm 0.5$	$t \pm 0.2$	$B \pm 0.5$	$C \pm 0.5$	$L \pm 0.5$	$E \pm 0.5$
50A	62	10.3	0.6	1.2	30	10	42	2
65A	77	10.3	0.6	1.2	30	22	54	2
80A	93	10.3	0.6	1.2	30	36	68	2
100A	113	13.8	0.7	1.65	30	30	62	2
125A	138	13.8	0.7	1.65	32	38	73	3
150A	166	13.8	1.0	1.65	32	48	83	3
200A	230	17.3	1.2	1.65	40	65	108	3
250A	275	17.3	1.2	1.65	40	83	126	3
300A	330	17.3	1.2	1.65	48	110	161	3
350A	361	17.3	1.5	1.65	48	125	176	3
400A	414	17.3	1.5	1.65	55	155	213	3
450A	460	17.3	1.5	1.65	60	147	210	3

▶ **AIR VENT HEADS,**BALL TYPE, FCD450 BODY, S.S. TRIM, PN10/16 FLANGED
DNV TYPE APPROVED

DN	Code	Flange OD	PCD	Holes no. x dia	
50	MV872320	165	125	4	18
65	MV872321	185	145	4	18
80	MV872322	200	160	8	18
100	MV872323	220	180	8	18
125	MV872324	250	210	8	18
150	MV872325	285	240	8	22
200	MV872326	340	295	8	22
250	MV872327	405	355	12	26



* SPARE P.E. BALLS AVAILABLE WITH CERTIFICATE



► **SLIP ON FLANGES,**
JIS B2210, 5K, FLAT FACED, SS400 MATERIAL

DN	Code	Flange OD	PCD	Holes no. x dia		Thickness
15	MV734602	80	60	4	12	9
20	MV734603	85	65	4	12	10
25	MV734604	95	75	4	12	10
32	MV734605	115	90	4	15	12
40	MV734606	120	95	4	15	12
50	MV734607	130	105	4	15	14
65	MV734608	155	130	4	15	14
80	MV734609	180	145	4	19	14
100	MV734610	200	165	8	19	16
125	MV734611	235	200	8	19	16
150	MV734612	265	230	8	19	18
200	MV734613	320	280	8	23	20
250	MV734614	385	345	12	23	22
300	MV734615	430	390	12	23	22
350	MV734616	480	435	12	25	24
400	MV734617	540	495	16	25	24

► **SLIP ON FLANGES,**
JIS B2210, 10K, FLAT FACED, SS400 MATERIAL

DN	Code	Flange OD	PCD	Holes no. x dia		Thickness
15	MV734622	95	70	4	15	12
20	MV734623	100	75	4	15	14
25	MV734624	125	90	4	19	14
32	MV734625	135	100	4	19	16
40	MV734626	140	105	4	19	16
50	MV734627	155	120	4	19	16
65	MV734628	175	140	4	19	18
80	MV734629	185	150	8	19	18
100	MV734630	210	175	8	19	18
125	MV734631	250	210	8	23	20
150	MV734632	280	240	8	23	22
200	MV734633	330	290	12	23	22
250	MV734634	400	355	12	25	24
300	MV734635	445	400	16	25	24
350	MV734636	490	445	16	25	26
400	MV734637	560	510	16	27	28



► **SLIP ON FLANGES,**
DIN PN10 FLAT FACED, SS400 MATERIAL

DN	Code	Flange OD	PCD	Holes no. x dia		Thickness
10	MV735521	90	60	4	14	14
15	MV735522	95	65	4	14	14
20	MV735523	105	75	4	14	16
25	MV735524	115	85	4	14	16
32	MV735525	140	100	4	18	16
40	MV735526	150	110	4	18	16
50	MV735527	165	125	4	18	18
65	MV735528	185	145	4	18	18
80	MV735529	200	160	8	18	20
100	MV735530	220	180	8	18	20
125	MV735531	250	210	8	18	22
150	MV735532	285	240	8	22	22
175	MV735533	315	270	8	22	24
200	MV735534	340	295	8	22	24
250	MV735535	395	350	12	22	26
300	MV735536	445	400	12	22	26
350	MV735537	505	460	16	22	28
400	MV735538	565	515	16	26	32
450	MV735539	615	565	20	26	34
500	MV735540	670	620	20	26	34



► **SLIP ON FLANGES,**
DIN PN16 FLAT FACED, SS400 MATERIAL

DN	Code	Flange OD	PCD	Holes no. x dia		Thickness
10	MV735551	90	60	4	14	14
15	MV735552	95	65	4	14	14
20	MV735553	105	75	4	14	16
25	MV735554	115	85	4	14	16
32	MV735555	140	100	4	18	16
40	MV735556	150	110	4	18	16
50	MV735557	165	125	4	18	18
65	MV735558	185	145	4	18	18
80	MV735559	200	160	8	18	20
100	MV735560	220	180	8	18	20
125	MV735561	250	210	8	18	22
150	MV735562	285	240	8	22	22
175	MV735563	315	270	8	22	24
200	MV735564	340	295	12	22	24
250	MV735565	405	355	12	26	26
300	MV735566	460	410	12	26	28
350	MV735567	520	470	16	26	30
400	MV735568	580	525	16	30	32
450	MV735569	640	585	20	30	38
500	MV735570	715	650	20	33	38



JIS

*FOD: FLANGE OUTER DIA *PCD: PITCH CIRCLE DIA *ALL DIMENSIONS ARE IN MM.

JIS		5K	10K	16K	20K	30K	40K
15	FOD	80	95	95	95	115	115
	PCD	60	70	70	70	80	80
	HOLES	4X12	4X15	4X15	4X15	4X19	4X19
20	FOD	85	100	100	100	120	120
	PCD	65	75	75	75	85	85
	HOLES	4X12	4X15	4X15	4X15	4X19	4X19
25	FOD	95	125	125	125	130	130
	PCD	75	90	90	90	95	95
	HOLES	4X12	4X19	4X19	4X19	4X19	4X19
32	FOD	115	135	135	135	140	140
	PCD	90	100	100	100	105	105
	HOLES	4X15	4X19	4X19	4X19	4X19	4X19
40	FOD	120	140	140	140	160	160
	PCD	95	105	105	105	120	120
	HOLES	4X15	4X19	4X19	4X19	4X23	4X23
50	FOD	130	155	155	155	165	165
	PCD	105	120	120	120	130	130
	HOLES	4X15	4X19	8X19	8X19	8X19	8X19
65	FOD	155	175	175	175	200	200
	PCD	130	140	140	140	160	160
	HOLES	4X12	4X19	8X19	8X19	8X23	8X23
80	FOD	180	185	200	200	210	210
	PCD	145	150	160	160	170	170
	HOLES	4X19	8X19	8X23	8X23	8X23	8X23
100	FOD	200	210	225	225	240	250
	PCD	165	175	185	185	195	205
	HOLES	8X19	8X19	8X23	8X23	8X25	8X25
125	FOD	235	250	270	270	275	300
	PCD	200	210	225	225	230	250
	HOLES	8X19	8X23	8X25	8X25	8X25	8X27
150	FOD	265	280	305	305	325	355
	PCD	230	240	260	260	275	295
	HOLES	8X19	8X23	12X25	12X25	12X27	12X33
200	FOD	320	330	350	350	370	405
	PCD	280	290	305	305	320	345
	HOLES	8X23	12X23	12X25	12X25	12X27	12X33
250	FOD	385	400	430	430	450	475
	PCD	345	355	380	380	390	410
	HOLES	12X23	12X25	12X27	12X27	12X33	12X33
300	FOD	430	445	480	480	515	540
	PCD	390	400	430	430	450	470
	HOLES	12X23	16X25	16X27	16X27	16X33	16X39
350	FOD	480	490	540	540	N/A	N/A
	PCD	435	445	480	480	N/A	N/A
	HOLES	12X25	16X25	16X33	16X33	N/A	N/A
400	FOD	540	560	605	605	N/A	N/A
	PCD	495	510	540	540	N/A	N/A
	HOLES	16X25	16X27	16X33	16X33	N/A	N/A
450	FOD	605	620	675	675	N/A	N/A
	PCD	555	565	605	605	N/A	N/A
	HOLES	16X25	20X27	20X33	20X33	N/A	N/A
500	FOD	655	675	730	730	N/A	N/A
	PCD	605	620	660	660	N/A	N/A
	HOLES	20X25	20X27	20X33	20X33	N/A	N/A
550	FOD	720	745	795	795	N/A	N/A
	PCD	665	680	720	720	N/A	N/A
	HOLES	20X27	20X33	20X39	20X39	N/A	N/A
600	FOD	770	795	845	845	N/A	N/A
	PCD	715	730	770	770	N/A	N/A
	HOLES	20X27	24X33	24X39	24X39	N/A	N/A
650	FOD	825	845	895	945	N/A	N/A
	PCD	770	780	820	850	N/A	N/A
	HOLES	24X27	24X33	24X39	24X48	N/A	N/A
700	FOD	875	905	960	995	N/A	N/A
	PCD	820	840	875	900	N/A	N/A
	HOLES	24X27	24X33	24X42	24X48	N/A	N/A

DIN

*FOD: FLANGE OUTER DIA *PCD: PITCH CIRCLE DIA *ALL DIMENSIONS ARE IN MM.

DN		PN6	PN10	PN16	PN25	PN40
15	FOD	80	95	95	95	95
	PCD	55	65	65	65	65
	HOLES	4X14	4X14	4X14	4X14	4X14
20	FOD	90	105	105	105	105
	PCD	55	75	75	75	75
	HOLES	4X14	4X14	4X14	4X14	4X14
25	FOD	100	115	115	115	115
	PCD	75	85	85	85	85
	HOLES	4X14	4X14	4X14	4X14	4X14
32	FOD	120	140	140	140	140
	PCD	90	100	100	100	100
	HOLES	4X14	4X18	4X18	4X18	4X18
40	FOD	130	150	150	150	150
	PCD	100	110	110	110	110
	HOLES	4X14	4X18	4X18	4X18	4X18
50	FOD	140	165	165	165	165
	PCD	110	125	125	125	125
	HOLES	4X14	4X18	4X18	4X18	4X18
65	FOD	160	185	185	185	185
	PCD	130	145	145	145	145
	HOLES	4X14	4X18	4X18	8X18	8X18
80	FOD	190	200	200	200	200
	PCD	150	160	160	160	160
	HOLES	4X18	8X18	8X18	8X18	8X18
100	FOD	210	220	220	235	235
	PCD	170	180	180	190	190
	HOLES	4X18	8X18	8X18	8X22	8X22
125	FOD	240	250	250	270	270
	PCD	200	210	210	220	220
	HOLES	8X18	8X18	8X18	8X26	8X26
150	FOD	265	285	285	300	300
	PCD	225	240	240	250	250
	HOLES	8X18	8X22	8X22	8X26	8X26
200	FOD	320	340	340	360	375
	PCD	280	295	295	310	320
	HOLES	8X18	8X22	12X22	12X26	12X30
250	FOD	375	395	405	425	450
	PCD	335	350	355	370	385
	HOLES	12X18	12X22	12X26	12X30	12X33
300	FOD	440	445	460	485	515
	PCD	395	400	410	430	450
	HOLES	12X22	12X22	12X26	16X30	16X33
350	FOD	490	505	520	555	580
	PCD	445	460	470	490	510
	HOLES	12X22	16X22	16X26	16X33	16X36
400	FOD	540	565	580	620	660
	PCD	495	515	525	550	585
	HOLES	16X22	16X26	16X30	16X36	16X39
450	FOD	595	615	640	670	685
	PCD	550	565	585	600	610
	HOLES	16x22	20X26	20X30	20X36	20X39
500	FOD	645	670	715	730	755
	PCD	600	620	650	660	670
	HOLES	20X22	20X26	20X33	20X36	20X42
600	FOD	755	780	840	845	890
	PCD	705	725	770	770	795
	HOLES	20X26	20X30	20X36	20X39	20X48
700	FOD	860	895	910	960	995
	PCD	810	840	840	875	900
	HOLES	24X26	24X30	24X36	24X42	24X48



Manufacturers Class Approvals



Manufacturers Quality Certificates





Copyright © Atlassea Group ve Atlas Gemi Vanaları ve Ekipmanları Ticaret Ltd. Şti. Bu katalog içeriğindeki tüm resim, tasarım, yazı, fotoğraf veya ürünleri Telif Hakları ile ilgili yasal mevzuat uyarınca korunmakta olup, Atlas Marine Valves'in yazılı izni olmadıkça kullanılamaz, kaynak gösterilerek dahi bir kısmı yada tamamı yayınlanamaz, her ne suretle olursa olsun ticari amaçla çoğaltma ve yayma yapılamaz.

Copyright © Atlassea Group and Atlas Marine Valves & Equipments Trading Co. Ltd. All images, designs, texts, photographs or products in this catalog are protected in accordance with the copyright laws and can not be used unless they are written by Atlas Marine Valves. No reproduction or dissemination shall be made commercially for any reason whatsoever.



HEADQUARTER

Atlas Marine Valves & Equipments Co. Ltd.

Defterdar Mh.
Otakcilar Cd. No. 60-A
Eyup, Istanbul Turkey

T: +90 212 613 91 10

GLOBAL SALES OFFICES AND STOCK POINTS

Turkey

Tuzla Shipyards

Evliya Celebi Mh.
Genc Osman Cd.No: 45
Tuzla, Istanbul Turkey

T: +90 216 493 90 42
sales.tr@atlasmarinevalves.com

Singapore

Atlas Marine Valves Singapore Pte. Ltd.

2 Clementi Loop # 01-06
LogisHub@Clementi 129809
Singapore

T: +65 6850 5272
sales.sg@atlasmarinevalves.com

Korea

Atlas HYV Busan Factory

19, Mieumsandan 2-Ro 16
Beon-Gil, Gangseo-Gu
Busan, Korea

T: +65 6850 5272
sales.sg@atlasmarinevalves.com

REPRESENTATIVE OFFICES

Greece

OkeanOne Ship Repair & Marine Equipment

144, Navarchou Notara
Piraeus 18536
Greece

T: +30 210 4292623 (3 lines)
info@okeanone.com

Portugal

Tormarine Technical Shippplies LDA

Rua João da Cruz Viegas,
nº 149 D 2750-382
Cascais – Portugal

T: +351 211 920 980
tormarine@tormarine.pt